

burda
SPECIAL

£3.75 / £1.70




A MAGAZINE FROM
JENNE BURDA

HARDANGER



57 Models
to
make yourself
Cushions & doilies
Table linens
Placemats & napkins
Home decorating ideas
Including
extra course section





803/01 A ring of
pretty roses on this
tablecloth is the best
way to add a touch of
country charm. To
start the installation
you will need a 50"
x 50" white cloth. It is
available in the DMCI

01

Say It with Roses



503/02 - 04 Quiet elegance results when you combine gleaming white and delicate gray. Embroidery specialists will work the Hardanger and the cross stitch embroidery in harmonious shades for these models which will be a pleasure to make and a pleasure to use.

Sizes: 79 x 79 cm to 80 x 85 cm (Fabric: Zweigart; embroidery threads: DMC).



Combine Hardanger and cross stitch
for center cloths that are sure to please.

Graceful Gray





A Touch of

*Hardanger
is the perfect
choice for a
table band or a
light, lacy
curtain*

Pure white was the classic color for curtains and table linens in Grandmother's day and it hasn't lost any of its appeal for us today. Combine white with a blue tablecloth or with blue ornaments to make it glimmer.

503/05 The various lace borders on this lacy curtain let light through but block out curious glances. You can easily adjust the size to fit the dimensions of your window. Size: 50 x 117.5 cm (Linen: Zweigart; embroidery thread from DMC).

503/06 Set a special table with this decorative table band. Size: 70.5 x 92.0 cm (Fabric from Zweigart; embroidery thread from DMC).



Nostalgia

07

Natural Look

*Combine fabric and embroidery thread in
harmonious shades and complement them both
with a border of crocheted lace.*



503/07 Crocheted lace is the perfect finishing touch for this embroidered tablecloth. Just follow our instructions and success is guaranteed. Size: 133 x 171 cm (fabric) - from Zweigart; thread from DMC.

503/08 + 09 Not enough time for a big project? Embroider one of these cushions. Since the motifs fit into the Aida cloth areas, embroidery placement is easy. Size: 30 x 30 cm (fabric: Zweigart; thread: DMC)



503/08 This square Motif can be used as a cover-up for the cushion cover.



503/09 Choose long stitch filling and overcast hem over 2 fabric threads in the motif center.

VBS
Bastel Service

„den muß ich haben“

Der creative Katalog für Kunst & Hobby!

Seiden- u. Stoffmalerei
Teddy- u. Puppenhobby
Batik u. Marmorieren
Schmuckgestaltung
Aquarellmalerei
Stempelhobby
Patchwork
Reliefgießen
Papierbasteln
Moosgummi
Schablonieren
Fimo- und Acryl

... das alles
und noch viel mehr auf
über 320 Katalogseiten!

„unverzichtbar“

**Kostenlos
anfordern!**

Tel. 0 42 31- 6 68 11



VBS Bastel Service
Große Straße 132
27283 Verden
Tel. 0 42 31-6 68 11
Fax 6 68 22

*A charming couple: tablecloth
and runner in the
same pattern. Each could also
play a solo part.*

Get the Point with Serrate Borders





503/10 With its sawtoothed borders, this is the perfect choice for those who prefer classic, uncluttered designs. If you have the time, embellish the center with a beautiful medallion. Size: 131 x 108 cm (Fabric from Zweigart; thread from DMC).

503/11 Frequent embroidery will in spectacular edge treatment make this runner the star on any table. We explain all embroidery steps in detail in our Course, starting on page 19. Size: 31.5 x 122 cm (Fabric from Zweigart; thread from DMC).

Unsere Leistung – Ihr Vorteil!

Wir führen mehr als 200 Handarbeitsstoffe zum Zerschneiden und Aufhängen in unserem Handarbeitsstudio. Hier sie können sich als NEU- u. DMG Stoffeile kaufen zu Festpreisen haben. Mehr als 30 Handarbeitsstoffe wurden von uns erworben. Halbes werden Sie gratis Internetbestellung: 130000

Handarbeitsstoff-Katalog

und mehr als 100 Original-Steckbriefe und den Angebot der dazu lieferbaren Perle- u. D. 50 u. Perle- u. D. 50-Größen-Perlen können Sie gegen eine Schutzgebühr von DM 10,- (Steckbriefe, Stecke, für einen) bei uns erhalten.

HANDARBEITSSTUDIO I. DREYER
 10714 NOVEMBER - KATZENPLATZ 17
 TEL. 030 31 43 07 - FAX 030 31 9 02 00



Geschäftzeiten: Mo, Di, Do, Fr 9-12 Uhr + 15-18 Uhr, Mi + Sa 9-12 Uhr

MÜTTER STÄRKEN

Müttergesundheitswerk:
 Gesundheit für Körper
 und Seele.
 Fragen Sie uns.
 Wir informieren Sie gerne.



MÜTTERGEWESSENWERK
 10714 NOVEMBER - KATZENPLATZ 17

(Telefon 17 40 17844) Home:
 Familienberatung, 030 40 17844
 10714 NOVEMBER - KATZENPLATZ 17

Handarbeiten die aus dem Rahmen fallen

Wir haben Ihnen
 ein 100% Handarbeitsstudio zum Zerschneiden und Aufhängen
 in unserem Handarbeitsstudio. Hier sie können sich als NEU- u. DMG
 Stoffeile kaufen zu Festpreisen haben. Mehr als 30 Handarbeitsstoffe
 wurden von uns erworben. Halbes werden Sie gratis Internetbestellung:
 130000

und mehr als 100 Original-Steckbriefe und den Angebot der dazu
 lieferbaren Perle- u. D. 50 u. Perle- u. D. 50-Größen-Perlen können Sie
 gegen eine Schutzgebühr von DM 10,- (Steckbriefe, Stecke, für einen)
 bei uns erhalten.

Geschäftzeiten: Mo, Di, Do, Fr 9-12 Uhr + 15-18 Uhr, Mi + Sa 9-12 Uhr



503/12 + 13 Square pattern elements are repeated regularly on these two beautiful center cloths. Each individual motif could also be embroidered to embellish small items such as greeting cards, pin cushions, sachets, or placemats. You might also consider using the outer border from model 13 to decorate a cushion. It could be used sparingly to accent the center or generously to cover

the entire cushion front.

Sizes: 80 x 80 cm or 67 x 67 cm (Fabrics from Zweigart; embroidery thread from DMC).



Tip: burda EMBROIDERY COURSE

Would you like to learn new embroidery techniques with a group of other enthusiasts? Write or phone for more information and registration: I-Made GmbH, Frankfurter 25, D-43107 Wuppertal, Tel.: 0212/44 1410.

Starring Role

Satin stitch star shines out in contrast to filigree openwork embroidery





14

Filigree Ornaments

*Classic Maltese crosses play the starring role on
tablecloth and runner, surround them with wide frames
of openwork embroidery for spectacular results.*



JOIN THE POPULAR CREATIVE TREND

503/14 How often have you thought that it would be nice to set the table without covering the beautiful embroidery? Here is a tablecloth, designed with this in mind. Your guests can enjoy your handwork throughout the meal.

Size: 130.5 x 171.5 cm.

503/15 Give your garden table a new dress for spring. Embroidering the runner with its filigree border and pattern of Maltese crosses and stars will be a treat for experienced stitchers.

Size: 27 x 95 cm (fabric for both models from Zweigart; embroidery threads from DMC).



Stylish accessories
for your home, decorative gifts,
romantic flower patterns,
modern crochet ideas

A magazine from Anne Bards





503/16 This little center cloth is the perfect choice for your first Hardanger project. Size: 52 x 52 cm (Fabric: Zweigart; thread: DMC)

503/17 Alternate satin stitches and openwork for an unusual edge treatment. Size: 74 x 74 cm (Fabric: from Zweigart; thread: from DMC.)

503/18 You'll be surprised how rapidly this small doily (42 x 42 cm) can be made. The pattern is easily adjusted to any size. (Fabric: Zweigart; thread: DMC.)

No matter how
you look at it,
each of these
three models
is a delight.
Best of all,
the embroidery
is easier
than it looks.
Surprise!
The "round"
tablecloth is
really an
octagon.



Stitch
by Stitch
to
Success



Super Gift Ideas

190015 - 22. These crocheted doilies are great for gifts or for your own home. They are the kind of doilies that you can use for a long time. The doilies are made of a soft, white yarn and are crocheted in a heart shape. They are a great gift for anyone who loves crocheting or who loves a good home decor item. They are also a great gift for anyone who loves a good crocheted doily. They are a great gift for anyone who loves a good crocheted doily.

COURSE

In order for you to successfully complete all the models illustrated in the COURSE section of this magazine, we suggest that you carefully read this course section and refer to it repeatedly while you are working.

For more information, please contact our editorial department: Burda Fashion GmbH, Postfach 10 15 53, D-7000 Stuttgart 1, Germany.

(English)

Hardanger is a type of drawn thread embroidery based on traditional Norwegian embroidery, especially that done in the area around the Hardanger fjord. Emphasized with stitch blocks surrounding the openwork pattern sections are typical for Hardanger. This embroidery is worked following a stitch chart. Abbreviations in the following list:

FE = fabric threads
PE = pattern repeat
FC = pattern chart

Always mark 1 FE and indicate centers or repeat points mentioned in individual instructions.

PREPARING EMBROIDERY

For models with buttonhole stitch edges, fabric must be cut at least 1 cm larger on all sides than the finished piece (see instruction). Cut fabric on straight grain, finish raw edges. Mark center of fabric in both directions (long and wide) using contrasting thread. You might also want to mark the spacing for each FC. Stitch over 4 FE just under 4 FE.

You can then use these stitches to check whether or not you count properly when abbreviating.

SARF STITCH

All Hardanger embroidery begins with satin stitch blocks. Normally a block consists of 5 rows stitched over 4 FE. These blocks are worked around pattern sections, either in a row (B, C) or vertically (D, E). They may also form separate pictures, such as flowers (F, G, H, I). You should always use an embroidery hoop to prevent the fabric

from pulling the FE together (see B, C, E).

OPEN AREAS

After the satin stitch blocks have been completed, FE stay to be removed, one by one. First cut FE directly next to the satin stitch block using sharp scissors. Draw FE out of fabric in opposite side stitch block. In this manner, you may alternatively remove FE and 4 FE with blocks and leave 4 FE intact in both directions, see B, G, H & I. Larger blocks may also be cut once in the center.

EYESHAVE FABRIC AND EMBROIDERY THREADS

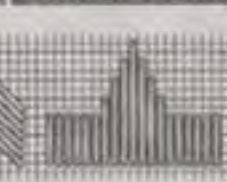
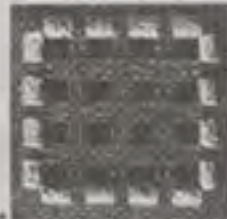
Hardanger is worked on even-weave fabrics. These have the same number of warp (lengthwise) and weft (crosswise) threads in a square area. Fabrics for the projects in this magazine range from 7 x 7 FE to 10.7 x 10.7 FE per square cm.

The finer the fabric, the finer the embroidery, and, consequently, the finer the thread that is used. In general, Hardanger is worked with point cotton size 3, 5 or 8 and 4-ply embroidery thread.

Choose your fabric and thread based on our suggestions listed under "Materials" in the instructions for each model. On page 42 you will find a list of suppliers. If necessary, you can ask them which shop in your neighborhood carries these products.

PATTERN CHARTS

You will find the FC in this magazine or on the enclosed work sheet (see instructions for each model). For this type of embroidery, the grid lines in the FC represent fabric threads (FE). Each FC, therefore, gives you the following information: how many FE are covered by each satin stitch block or decorative stitch, how many FE are to be removed for open areas, how many FE are worked in bars.



Instructions

In this section, you will find the instructions for every model. Before you begin, read the complete instructions carefully. You will also find more important information in the Course, beginning on page 10.

KEY TO SYMBOLS

- **1st set**
- **water attack (attack)**
2 sets (by score of 1 before
breakout) (27)
- **continuous set**
- **continuous set with
points**
- **standing row 4 11**
- **2 standings row 2 11
each**
- **kushaku (style)
butter hole (style)**
- **large (style) like (row)
small (row) (row)**
- **large (row) like (row)
small (row) (row)**
- **photo (style) 1**
- **year (style) 2**
- **Midnight (row)**
- **1/2 (Midnight) row with
2 (standings) row 2 11
each**
- **1/2 (Midnight) row**

- ☆ VERY EASY
 ☆☆ EASY
 ☆☆☆ CHALLENGING

☆ 503/01
Center Cloth

Pattern charts (A) A & B on worksheet C.

New response: 40% to 50% less

Endometriosis: 281 & 282 cont.

Stockings: 140 x 500 YL

[illegible]

Statistical analysis. All values are given as 50 ± 50 cm, showing the average pattern (SD) where appropriate. A comparison of each treatment group against the other two groups was made using the Wilcoxon signed rank test. The Wilcoxon test is a non-parametric test of the null hypothesis of no difference in the median of two samples. When the Wilcoxon test indicates that there is a difference, we then calculated the exact probability of observing the difference in the Wilcoxon test statistic, assuming the null hypothesis. When the Wilcoxon test indicates that there is a difference, we then calculated the exact probability of observing the difference in the Wilcoxon test statistic, assuming the null hypothesis. When the Wilcoxon test indicates that there is a difference, we then calculated the exact probability of observing the difference in the Wilcoxon test statistic, assuming the null hypothesis.

From finished antlers, trim away side. Break into triangles of individual, overlapping 1/2" slices (up angle half by center) and overlap most of them. Attach each to edge of antler with spurs diagonally with 1/2" wire, tying tightly and carefully. Trim away excess wire on wiring with using sharp scissors. Place antlers back wiring side using these pressed side.

• 503/02
Center Cloth

with cross stitch embroidery on page 6. Patterns (Charts 1-3) A & B are available at A.

Size: overall, 74 x 24 cm.

Dimensions: 318 x 318 mm
 Material: paper, 80 x 80 gsm
 Number of pages: 208 x 208 gsm

[illegible]

1 =	maize yellow	743
2 =	light hay green	348
3 =	dark hay green	330
4 =	br green	319
5 =	olive grey	979
6 =	medium grey-blue	910
7 =	dark grey-blue	924

Source: from CIE.

Scaphiophryne: catfishes are present in 35.4% of all sites examined and always. Anguilliform worms occur in 100% of samples of some of the sites, especially 13. In some sites of the river, following 24 h after rain, catfishes occur with more than 2.4 $\times 10^3$ m⁻² strands of anguilliform worms. 50.2% of all the individuals are female, whereas for each habitat, specimens from PC are 80%. The sizes of fishes with an index of individuals are categorized as 17 is considered to be the smallest size, from PCs. The grey flannel worm of PCA might be the most species of Nephrolepis, but specimens of other Nephrolepis, like PC, 9.4% occurs in 5 of the habitats. For each habitat, specimens from PC are 70%. Which results suggest that in these areas.

☆ 503/03
Center Cloth

with some with embryology on page 8. Patient chart (PC) A is uninfected, C, PCA, one below with.

Figure 1. *Staphylococcus aureus* strains.

Deluxbury: 240 x 240 mm
width/height, 70 x 70 mm
width/height, 50 x 50 mm

[illegible][illegible]

☆ 503/04
Center Cloth

with cross stitch embroidery on page 5. Pattern chart (C) D4 on worksheet A + D4 A - C, see below.

Seals returned: 0.5 + 0.5 mm

Endemism: 3/3 x 3/3 cons
pitcher/propagule 75 x 75 cm;
Hardanger mod A: 60 x 108 ft;
mod B: 44 x 64 ft; mod C: 28
x 60 ft.

Materials: 1.05 m white woven fabric; 740 cm wide; 100 fabric threads (PT)/10 cm (Zweigart art 3825/101 "suggins"); 1 dm; (19 g) pearl cotton #6 in size for satin stitch; 1 cup (19 g) pearl cotton #8 or gray #28 for outlining; embroidery floss (stranded cotton); 1 dm; $\frac{1}{4}$ " = 5 dm; 1 each in following colors for rose stitch.

1 x medium grey/blue	Y26*
2 x dark grey/blue	Y24
Threads from DMC	

Instructions: cut holes on sides to 125 x 100 cm and measure new edges. Begin with the side assembly of center of each side using a 2 cm wide strip of black tape on the inside edge of the hole. Then use PCOA to seal each joint area. 2 x 2 ft. using 2 sheets of underlayment. Then use 2 sheets of 1/2" rigid insulation between joints. For each 4'x8' panel, use 16 PC by 40". The gray shank area of PC must be sealed using 1/2" of the underlayment. Work Handiwrap following PCA to PC. A sealing creates a 2" air space. Then using 10 cm underlayment and finish edges with plywood sheathing. Use under 1 cm wide tape, measure air seal. Strip torn by hand. Press completed bubblefilm between side under during paneling.



503/03 B

503/05
Curtain

on page 6.
Pattern charts (PC) A + B on
work sheet A

Seam approx. 50 x 87.5 cm, laid
over 12 cm wide.

Embroidery: motif A: 496 x 876
 B: motif B: 122 x 876 B1

Materials: 0.75 m white muslin (1.40 m wide, 100 fabric threads (PT)/10 cm (2-weight), no. 3404/100 "Dulles"; 8 skin, 110 g each) (poor cotton 5 for anti-static); 1 ball (10 g) (poor cotton 8 for buttonhole stitch wiper, 8 skin. Apply antistatic band in 16 for reinforcement bars, keep stitches, and Muller machine.

[illegible]

503/04 R

503/06
Table Band

in cross shape on page 7.
Pattern chart (PC) on worksheet
8.

Slam height: 70.5 + 42.5 cm
8 + 8 + 14 + 14 + 8 + 8 = 70.5 cm

Materials: 0.80 m white evenweave fabric, 140 cm wide, 80 fabric strands 710/10 cm (Zwalpert art. 3256/100 "Bulldog"), 5 ske. (10 g each) pearl cotton 3 for satin stitch and sumptuous stitch edge; 5 balls (10 g each) pearl cotton 8 for macramé; 5 bars, all fibers, 48 stitches, and metal wires.

limitations, cut tubes are ground to 80 x 112 cm and separated into sections. Again, underbidding and short blocks in terms of one and two, up to 3 or 4 from the edge, are marked by double line in the center of the PC sheet in 10 m intervals. Work starts further in the center of the range. Work marks are numbered from 100 to 200, indicating them with poles and labels attached to them in PC. Work is scheduled from 0800, page 201 in terms of table board. For the smaller model cut work, the same range 477 and work lines in open areas are shown in PC, 201, table with a Mother

Next, work star stitch. Finally, work buttonhole stitch edge and trim excess fabric directly next to buttonhole stitch, using sharp scissors. Press finished table band from wrong side using damp pressing cloth.



503/04 C



503/04 A

503/10 Tablecloth

on page 10.

Pattern chart (PC) on worksheet 8.

Size: approx. 121 x 188 cm.

Embroidery: 740 x 1040 ft.

Materials: 1.90 m beige evenweave fabric, 180 cm wide, 85 fabric threads (75/10 cm (Zweigart, art. 3322/99 "Vielmo"). 10 ske. (10 g each) pearl cotton 5 for some white blocks and cable stitch; 3 balls (10 g each) pearl cotton 8 for needlewomen bars with points, Maltese crosses, star stitches, cording over 2 FT, and 1 Maltese cross. All threads in size from DMC.

Instructions: cut fabric on grain to 155 x 190 cm and overcast raw edges. Begin embroidering star stitch blocks at center of one end, approx. 28 cm from edge of fabric (22 cm to embroidery + 44 FT to 1st star stitch block) as marked by double arrow in PC. The PC shows it is embroidery from double arrow to corner. Complete all further quarters on mirror images. First work all star stitches, star stitches, and cable stitches. Then embroider open areas with needlewomen bars with points, Maltese crosses, a Maltese cross, and cording. Trim fabric to 28 cm from embroidery. Draw out 1 FT on each side, 9 cm from edge of fabric, removing thread only to corner formed where 2 drawn thread lines meet. Turn under 3 cm wide double hem, easing corners, and press. Work hemstitching along outer edge of drawn thread lines, building 2 FT, insert needle 2 FT down and stitch hem with each stitch. Press finished tablecloth from wrong side using damp pressing cloth.

503/11 Runner

on page 11.

Pattern chart (PC) on worksheet 9.

Size: approx. 21.5 x 122 cm.

Embroidery: 268 x 1326 ft.

Materials: 0.45 m beige evenweave fabric, 140 cm wide, 85 fabric threads (75/10 cm (Zweigart, art. 3322/99 "Vielmo"). 6 ske. (10 g each) pearl cotton 5 for some white blocks, cable stitch, and for the upperwork edge; 2 balls (10 g each) pearl cotton 8 for needlewomen bars with points, star with bars, cording over 2 FT and 1 Maltese cross. Threads in size from DMC.

Instructions: cut fabric on grain to 45 x 125 cm and overcast raw edges. Begin embroidering star stitch blocks at center of one end, approx. 7.5 cm from edge of fabric as marked by double arrow in PC. The PC shows it is embroidery from double arrow to corner. Complete all further quarters on mirror images. First work all some stitches, star stitches, and cable stitches. Then embroider open areas with needlewomen bars with points, Maltese crosses, a Maltese cross, and cording. Finally, for upperwork edge, remove 1 FT piece by piece, just some length at a time, and work needlewomen bars and star stitch blocks in sections, following PC. When entire upperwork edge has been completed, trim away excess 1 FT using sharp, pointed scissors. Press, remove raw wings side using damp pressing cloth.

503/12 Center Cloth

with gray embroidery on page 12.

Pattern chart (PC) on worksheet 10.

Size: approx. 80 x 80 cm.

Embroidery: 524 x 524 FT.

Materials: 1.00 m white evenweave fabric, 140 cm wide, 71 fabric threads (75/10 cm (Zweigart, art. 3270/1 "Dorcas"). 6 ske. (10 g each) pearl cotton 3 in white; 7 ball (10 g each) pearl cotton 8 in light gray 760 for needlewomen bars and loop stitch fabric. All threads from DMC.

Instructions: cut fabric on grain to 100 x 100 cm and overcast raw edges. Begin embroidering some white blocks at center of one side, approx. 13 cm from edge of fabric as marked by arrow in PC. The PC shows it is embroidery from arrow to corner. To complete with further 3 cm PC by 90°. Embroider open areas with needlewomen bars and loop stitch fabric left. For hemstitching, draw out 1 FT on each side; 4 FT outside embroidery removing thread only to corner formed where 2 drawn thread lines meet. Trim fabric to 7.5 cm from drawn thread lines. Turn under 2.5 cm wide double hem, easing corners. Press. Work hemstitching along outer edge of drawn thread line, building 2 FT, insert needle 1 FT down and stitch hem with each stitch. Press finished tablecloth from wrong side using damp pressing cloth.

503/13 Center Cloth

on page 13.

Pattern chart (PC) on worksheet 11.

Size: approx. 67 x 67 cm.

Embroidery: 412 x 412 FT.

Materials: 0.90 m white evenweave fabric, 140 cm wide, 71 fabric threads (75/10 cm (Zweigart, art. 3270/1 "Dorcas"). 6 ske. (10 g each) pearl cotton 3 in white; 7 ball (10 g each) pearl cotton 8 in white for needlewomen bars and loop stitch fabric. All threads from DMC.

Instructions: cut fabric on grain to 90 x 90 cm and overcast raw edges. Begin embroidering some white blocks at center of one side, approx. 16 cm from edge of fabric as marked by arrow in PC. The PC shows it is embroidery from arrow to corner. To complete all further quarters turn PC by 90°. Embroider open areas with needlewomen bars and loop stitch fabric following PC for the hem, turn fabric to 10.5 cm outside embroidery, turn under 3 cm wide double hem, easing corners, and press. Stitch hem by hand. Press finished tablecloth from wrong side using damp pressing cloth.

503/14 Tablecloth

on page 14.

Pattern chart (PC) on worksheet 12.

Size: approx. 120.2 x 172.5 cm.

Embroidery: 998 x 1216 FT.

Materials: 2.00 m beige evenweave fabric, 180 cm wide, 80 fabric threads (75/10 cm (Zweigart, art. 3322/99 "Vielmo"). 10 ske. (10 g each) pearl cotton 5 in white for some stitch; 6 balls (10 g each) pearl cotton 8 in white for needlewomen bars with points, Maltese crosses, and hemstitching. All threads from DMC.

Instructions: cut fabric on grain to 155 x 200 cm and overcast raw edges. Mark center of fabric in both directions with running stitches in contrasting color, spacing over 4 FT, under 4 FT. Begin embroidery at center of tablecloth in double arrow in PC. Work following PC. First work all some stitches. Then embroider open areas with needlewomen bars with points and Maltese crosses for the right long edge work to corner C. Then repeat pattern repeat (PC) from arrow A to B 2 times, finishing with white loop stitch fabric C to D. For the lower right, half of horizontal edge, work to corner E. Then repeat pattern repeat (PC) from arrow A to B 2 times, finishing with white loop stitch fabric E to F. Mark upper right half of horizontal white as mirror image of lower half. Repeat entire embroidery on mirror image for left side. For hemstitching, draw out 1 FT on each side, 6 FT inside embroidery, removing thread only to corner formed where 2 drawn thread lines meet. Trim fabric to 7.5 cm from drawn threads. Turn under 2.5 cm wide double hem, easing corners. Press. Work hemstitching along outer edge of drawn thread line, building 2 FT, insert needle 1 FT down and stitch hem with each stitch. Press finished tablecloth from wrong side using damp pressing cloth.



ooo 503/15

Runner

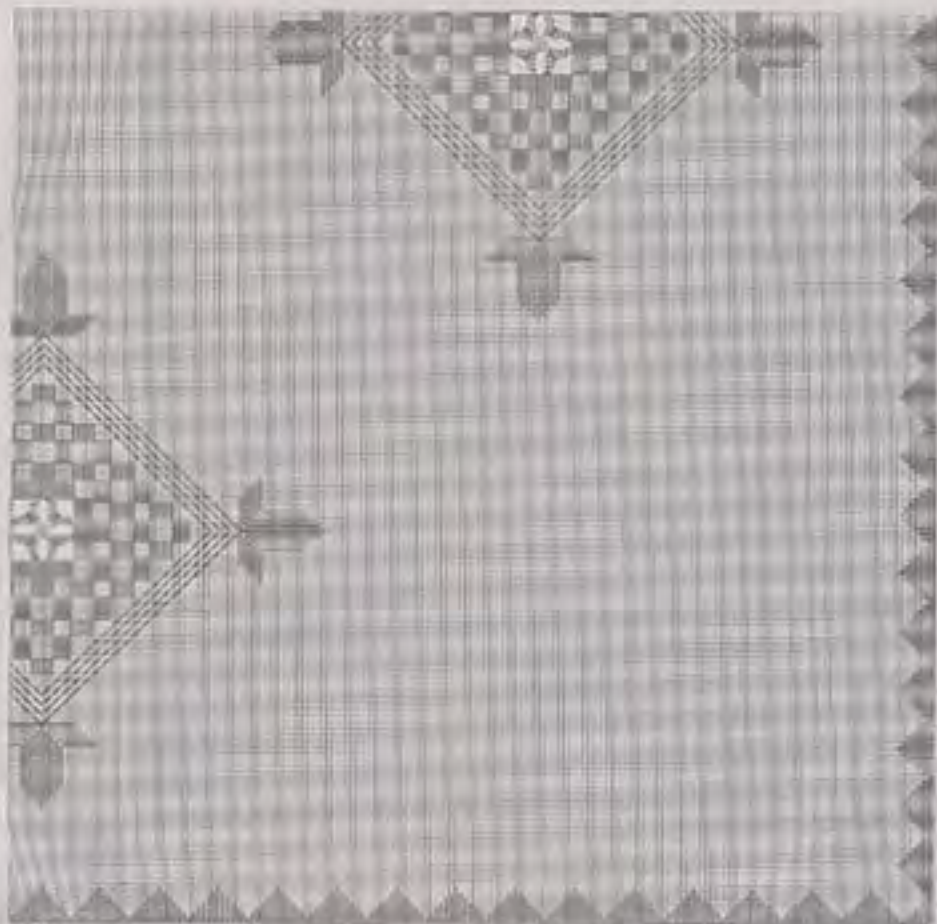
with opposite edge, on page 15

Pattern Chart PC, page 10

Size approx. 17 x 15 in.

Substrate: 204 x 718 1/2

Materials: 1) all a large amount of material, 140 in wide, 25 feet long, 95/10, 100, 120, 140, 160, 180, 200, 220, 240, 260, 280, 300, 320, 340, 360, 380, 400, 420, 440, 460, 480, 500, 520, 540, 560, 580, 600, 620, 640, 660, 680, 700, 720, 740, 760, 780, 800, 820, 840, 860, 880, 900, 920, 940, 960, 980, 1000, 1020, 1040, 1060, 1080, 1100, 1120, 1140, 1160, 1180, 1200, 1220, 1240, 1260, 1280, 1300, 1320, 1340, 1360, 1380, 1400, 1420, 1440, 1460, 1480, 1500, 1520, 1540, 1560, 1580, 1600, 1620, 1640, 1660, 1680, 1700, 1720, 1740, 1760, 1780, 1800, 1820, 1840, 1860, 1880, 1900, 1920, 1940, 1960, 1980, 2000, 2020, 2040, 2060, 2080, 2100, 2120, 2140, 2160, 2180, 2200, 2220, 2240, 2260, 2280, 2300, 2320, 2340, 2360, 2380, 2400, 2420, 2440, 2460, 2480, 2500, 2520, 2540, 2560, 2580, 2600, 2620, 2640, 2660, 2680, 2700, 2720, 2740, 2760, 2780, 2800, 2820, 2840, 2860, 2880, 2900, 2920, 2940, 2960, 2980, 3000, 3020, 3040, 3060, 3080, 3100, 3120, 3140, 3160, 3180, 3200, 3220, 3240, 3260, 3280, 3300, 3320, 3340, 3360, 3380, 3400, 3420, 3440, 3460, 3480, 3500, 3520, 3540, 3560, 3580, 3600, 3620, 3640, 3660, 3680, 3700, 3720, 3740, 3760, 3780, 3800, 3820, 3840, 3860, 3880, 3900, 3920, 3940, 3960, 3980, 4000, 4020, 4040, 4060, 4080, 4100, 4120, 4140, 4160, 4180, 4200, 4220, 4240, 4260, 4280, 4300, 4320, 4340, 4360, 4380, 4400, 4420, 4440, 4460, 4480, 4500, 4520, 4540, 4560, 4580, 4600, 4620, 4640, 4660, 4680, 4700, 4720, 4740, 4760, 4780, 4800, 4820, 4840, 4860, 4880, 4900, 4920, 4940, 4960, 4980, 5000, 5020, 5040, 5060, 5080, 5100, 5120, 5140, 5160, 5180, 5200, 5220, 5240, 5260, 5280, 5300, 5320, 5340, 5360, 5380, 5400, 5420, 5440, 5460, 5480, 5500, 5520, 5540, 5560, 5580, 5600, 5620, 5640, 5660, 5680, 5700, 5720, 5740, 5760, 5780, 5800, 5820, 5840, 5860, 5880, 5900, 5920, 5940, 5960, 5980, 6000, 6020, 6040, 6060, 6080, 6100, 6120, 6140, 6160, 6180, 6200, 6220, 6240, 6260, 6280, 6300, 6320, 6340, 6360, 6380, 6400, 6420, 6440, 6460, 6480, 6500, 6520, 6540, 6560, 6580, 6600, 6620, 6640, 6660, 6680, 6700, 6720, 6740, 6760, 6780, 6800, 6820, 6840, 6860, 6880, 6900, 6920, 6940, 6960, 6980, 7000, 7020, 7040, 7060, 7080, 7100, 7120, 7140, 7160, 7180, 7200, 7220, 7240, 7260, 7280, 7300, 7320, 7340, 7360, 7380, 7400, 7420, 7440, 7460, 7480, 7500, 7520, 7540, 7560, 7580, 7600, 7620, 7640, 7660, 7680, 7700, 7720, 7740, 7760, 7780, 7800, 7820, 7840, 7860, 7880, 7900, 7920, 7940, 7960, 7980, 8000, 8020, 8040, 8060, 8080, 8100, 8120, 8140, 8160, 8180, 8200, 8220, 8240, 8260, 8280, 8300, 8320, 8340, 8360, 8380, 8400, 8420, 8440, 8460, 8480, 8500, 8520, 8540, 8560, 8580, 8600, 8620, 8640, 8660, 8680, 8700, 8720, 8740, 8760, 8780, 8800, 8820, 8840, 8860, 8880, 8900, 8920, 8940, 8960, 8980, 9000, 9020, 9040, 9060, 9080, 9100, 9120, 9140, 9160, 9180, 9200, 9220, 9240, 9260, 9280, 9300, 9320, 9340, 9360, 9380, 9400, 9420, 9440, 9460, 9480, 9500, 9520, 9540, 9560, 9580, 9600, 9620, 9640, 9660, 9680, 9700, 9720, 9740, 9760, 9780, 9800, 9820, 9840, 9860, 9880, 9900, 9920, 9940, 9960, 9980, 10000, 10020, 10040, 10060, 10080, 10100, 10120, 10140, 10160, 10180, 10200, 10220, 10240, 10260, 10280, 10300, 10320, 10340, 10360, 10380, 10400, 10420, 10440, 10460, 10480, 10500, 10520, 10540, 10560, 10580, 10600, 10620, 10640, 10660, 10680, 10700, 10720, 10740, 10760, 10780, 10800, 10820, 10840, 10860, 10880, 10900, 10920, 10940, 10960, 10980, 11000, 11020, 11040, 11060, 11080, 11100, 11120, 11140, 11160, 11180, 11200, 11220, 11240, 11260, 11280, 11300, 11320, 11340, 11360, 11380, 11400, 11420, 11440, 11460, 11480, 11500, 11520, 11540, 11560, 11580, 11600, 11620, 11640, 11660, 11680, 11700, 11720, 11740, 11760, 11780, 11800, 11820, 11840, 11860, 11880, 11900, 11920, 11940, 11960, 11980, 12000, 12020, 12040, 12060, 12080, 12100, 12120, 12140, 12160, 12180, 12200, 12220, 12240, 12260, 12280, 12300, 12320, 12340, 12360, 12380, 12400, 12420, 12440, 12460, 12480, 12500, 12520, 12540, 12560, 12580, 12600, 12620, 12640, 12660, 12680, 12700, 12720, 12740, 12760, 12780, 12800, 12820, 12840, 12860, 12880, 12900, 12920, 12940, 12960, 12980, 13000, 13020, 13040, 13060, 13080, 13100, 13120, 13140, 13160, 13180, 13200, 13220, 13240, 13260, 13280, 13300, 13320, 13340, 13360, 13380, 13400, 13420, 13440, 13460, 13480, 13500, 13520, 13540, 13560, 13580, 13600, 13620, 13640, 13660, 13680, 13700, 13720, 13740, 13760, 13780, 13800, 13820, 13840, 13860, 13880, 13900, 13920, 13940, 13960, 13980, 14000, 14020, 14040, 14060, 14080, 14100, 14120, 14140, 14160, 14180, 14200, 14220, 14240, 14260, 14280, 14300, 14320, 14340, 14360, 14380, 14400, 14420, 14440, 14460, 14480, 14500, 14520, 14540, 14560, 14580, 14600, 14620, 14640, 14660, 14680, 14700, 14720, 14740, 14760, 14780, 14800, 14820, 14840, 14860, 14880, 14900, 14920, 14940, 14960, 14980, 15000, 15020, 15040, 15060, 15080, 15100, 15120, 15140, 15160, 15180, 15200, 15220, 15240, 15260, 15280, 15300, 15320, 15340, 15360, 15380, 15400, 15420, 15440, 15460, 15480, 15500, 15520, 15540, 15560, 15580, 15600, 15620, 15640, 15660, 15680, 15700, 15720, 15740, 15760, 15780, 15800, 15820, 15840, 15860, 15880, 15900, 15920, 15940, 15960, 15980, 16000, 16020, 16040, 16060, 16080, 16100, 16120, 16140, 16160, 16180, 16200, 16220, 16240, 16260, 16280, 16300, 16320, 16340, 16360, 16380, 16400, 16420, 16440, 16460, 16480, 16500, 16520, 16540, 16560, 16580, 16600, 16620, 16640, 16660, 16680, 16700, 16720, 16740, 16760, 16780, 16800, 16820, 16840, 16860, 16880, 16900, 16920, 16940, 16960, 16980, 17000, 17020, 17040, 17060, 17080, 17100, 17120, 17140, 17160, 17180, 17200, 17220, 17240, 17260, 17280, 17300, 17320, 17340, 17360, 17380, 17400, 17420, 17440, 17460, 17480, 17500, 17520, 17540, 17560, 17580, 17600, 17620, 17640, 17660, 17680, 17700, 17720, 17740, 17760, 17780, 17800, 17820, 17840, 17860, 17880, 17900, 17920, 17940, 17960, 17980, 18000, 18020, 18040, 18060, 18080, 18100, 18120, 18140, 18160, 18180, 18200, 18220, 18240, 18260, 18280, 18300, 18320, 18340, 18360, 18380, 18400, 18420, 18440, 18460, 18480, 18500, 18520, 18540, 18560, 18580, 18600, 18620, 18640, 18660, 18680, 18700, 18720, 18740, 18760, 18780, 18800, 18820, 18840, 18860, 18880, 18900, 18920, 18940, 18960, 18980, 19000, 19020, 19040, 19060, 19080, 19100, 19120, 19140, 19160, 19180, 19200, 19220, 19240, 19260, 19280, 19300, 19320, 19340, 19360, 19380, 19400, 19420, 19440, 19460, 19480, 19500, 19520, 19540, 19560, 19580, 19600, 19620, 19640, 19660, 19680, 19700, 19720, 19740, 19760, 19780, 19800, 19820, 19840, 19860, 19880, 19900, 19920, 19940, 19960, 19980, 20000, 20020, 20040, 20060, 20080, 20100, 20120, 20140, 20160, 20180, 20200, 20220, 20240, 20260, 20280, 20300, 20320, 20340, 20360, 20380, 20400, 20420, 20440, 20460, 20480, 20500, 20520, 20540, 20560, 20580, 20600, 20620, 20640, 20660, 20680, 20700, 20720, 20740, 20760, 20780, 20800, 20820, 20840, 20860, 20880, 20900, 20920, 20940, 20960, 20980, 21000, 21020, 21040, 21060, 21080, 21100, 21120, 21140, 21160, 21180, 21200, 21220, 21240, 21260, 21280, 21300, 21320, 21340, 21360, 21380, 21400, 21420, 21440, 21460, 21480, 21500, 21520, 21540, 21560, 21580, 21600, 21620, 21640, 21660, 21680, 21700, 21720, 21740, 21760, 21780, 21800, 21820, 21840, 21860, 21880, 21900, 21920, 21940, 21960, 21980, 22000, 22020, 22040, 22060, 22080, 22100, 22120, 22140, 22160, 22180, 22200, 22220, 22240, 22260, 22280, 22300, 22320, 22340, 22360, 22380, 22400, 22420, 22440, 22460, 22480, 22500, 22520, 22540, 22560, 22580, 22600, 22620, 22640, 22660, 22680, 22700, 22720, 22740, 22760, 22780, 22800, 22820, 22840, 22860, 22880, 22900, 22920, 22940, 22960, 22980, 23000, 23020, 23040, 23060, 23080, 23100, 23120, 23140, 23160, 23180, 23200, 23220, 23240, 23260, 23280, 23300, 23320, 23340, 23360, 23380, 23400, 23420, 23440, 23460, 23480, 23500, 23520, 23540, 23560, 23580, 23600, 23620, 23640, 23660, 23680, 23700, 23720, 23740, 23760, 23780, 23800, 23820, 23840, 23860, 23880, 23900, 23920, 23940, 23960, 23980, 24000, 24020, 24040, 24060, 24080, 24100, 24120, 24140, 24160, 24180, 24200, 24220, 24240, 24260, 24280, 24300, 24320, 24340, 24360, 24380, 24400, 24420, 24440, 24460, 24480, 24500, 24520, 24540, 24560, 24580, 24600, 24620, 24640, 24660, 24680, 24700, 24720, 24740, 24760, 24780, 24800, 24820, 24840, 24860, 24880, 24900, 24920, 24940, 24960, 24980, 25000, 25020, 25040, 25060, 25080, 25100, 25120, 25140, 25160, 25180, 25200, 25220, 25240, 25260, 25280, 25300, 25320, 25340, 25360, 25380, 25400, 25420, 25440, 25460, 25480, 25500, 25520, 25540, 25560, 25580, 25600, 25620, 25640, 25660, 25680, 25700, 25720, 25740, 25760, 25780, 25800, 25820, 25840, 25860, 25880, 25900, 25920, 25940, 25960, 25980, 26000, 26020, 26040, 26060, 26080, 26100, 26120, 26140, 26160, 26180, 26200, 26220, 26240, 26260, 26280, 26300, 26320, 26340, 26360, 26380, 26400, 26420, 26440, 26460, 26480, 26500, 26520, 26540, 26560, 26580, 26600, 26620, 26640, 26660, 26680, 26700, 26720, 26740, 26760, 26780, 26800, 26820, 26840, 26860, 26880, 26900, 26920, 26940, 26960, 26980, 27000, 27020, 27040, 27060, 27080, 27100, 27120, 27140, 27160, 27180, 27200, 27220, 27240, 27260, 27280, 27300, 27320, 27340, 27360, 27380, 27400, 27420, 27440, 27460, 27480, 27500, 27520, 27540, 27560, 27580, 27600, 27620, 27640, 27660, 27680, 27700, 27720, 27740, 27760, 27780, 27800, 27820, 27840, 27860, 27880, 27900, 27920, 27940, 27960, 27980, 28000, 28020, 28040, 28060, 28080, 28100, 28120, 28140, 28160, 28180, 28200, 28220, 28240, 28260, 28280, 28300, 28320, 28340, 28360, 28380, 28400, 28420, 28440, 28460, 28480, 28500, 28520, 28540, 28560, 28580, 28600, 28620, 28640, 28660, 28680, 28700, 28720, 28740, 28760, 28780, 28800, 28820, 28840, 28860, 28880, 28900, 28920, 28940, 28960, 28980, 29000, 29020, 29040, 29060, 29080, 29100, 29120, 29140, 29160, 29180, 29200, 29220, 29240, 29260, 29280, 29300, 29320, 29340, 29360, 29380, 29400, 29420, 29440, 29460, 29480, 29500, 29520, 29540, 29560, 29580, 29600, 29620, 29640, 29660, 29680, 29700, 29720, 29740, 29760, 29780, 29800, 29820, 29840, 29860, 29880, 29900, 29920, 29940, 29960, 29980, 30000, 30020, 30040, 30060, 30080, 30100, 30120, 30140, 30160, 30180, 30200, 30220, 30240, 30260, 30280, 30300, 30320, 30340, 30360, 30380, 30400, 30420, 30440, 30460, 30480, 30500, 30520, 30540, 30560, 30580, 30600, 30620, 30640, 30660, 30680, 30700, 30720, 30740, 30760, 30780, 30800, 30820, 30840, 30860, 30880, 30900, 30920, 30940, 30960, 30980, 31000, 31020, 31040, 31060, 31080, 31100, 31120, 31140, 31160, 31180, 31200, 31220, 31240, 31260, 31280, 31300, 31320, 31340, 31360, 31380, 31400, 31420, 31440, 31460, 31480, 31500, 31520, 31540, 31560, 31580, 31600, 31620, 31640, 31660, 31680, 31700, 31720, 31740, 31760, 31780, 31800, 31820, 31840, 31860, 31880, 31900, 31920, 31940, 31960, 31980, 32000, 32020, 32040, 32060, 32080, 32100, 32120, 32140, 32160, 32180, 32200, 32220, 32240, 32260, 32280, 32300, 32320, 32340, 32360, 32380, 32400, 32420, 32440, 32460, 32480, 32500, 32520, 32540, 32560, 32580, 32600, 32620, 32640, 32660, 32680, 32700, 32720, 32740, 32760, 32780, 32800, 32820, 32840, 32860, 32880, 32900, 32920, 32940, 32960, 32980, 33000, 33020, 33040, 33060, 33080, 33100, 33120, 33140, 33160, 33180, 33200, 33220, 33240, 33260, 33280, 33300, 33320, 33340, 33360, 33380, 33400, 33420, 33440, 33460, 33480, 33500, 33520, 33540, 33560, 33580, 33600, 33620, 33640, 33660, 33680, 33700, 33720, 33740, 33760, 33780, 33800, 33820, 33840, 33860, 33880, 33900, 33920, 33940, 33960, 33980, 34000, 34020, 34040, 34060, 34080, 34100, 34120, 34140, 34160, 34180, 34200, 34220, 34240, 34260, 34280, 34300, 34320, 34340, 34360, 34380, 34400, 34420, 34440, 34460, 34480, 34500, 34520, 34540, 34560, 34580, 34600, 34620, 34640, 34660, 34680, 34700, 34720, 34740, 34760, 34780, 34800, 34820, 34840, 34860, 34880, 34900, 34920, 34940, 34960, 34980, 35000, 35020, 35040, 35060, 35080, 35100, 35120, 35140, 35160, 35180, 35200, 35220, 35240, 35260, 35280, 35300, 35320, 35340, 35360, 35380, 35400, 35420, 35440, 35460, 35480, 35500, 35520, 35540, 35560, 35580, 35600, 35620, 35640, 35660, 35680, 35700, 35720, 35740, 35760, 35780, 35800, 35820, 35840, 35860, 35880, 35900, 35920, 35940, 35960, 35980, 36000, 36020



503/16

503/16 Dolly

on page 16.
Pattern chart (PC) see above.
Size: approx. 52 x 52 cm.
Embroidery: 362 x 362 FT.

Materials: 0.70 m white even-weave fabric, 140 cm wide, 75 fabric threads 87/10 cm (Zweigart, art. 3306/100 "Hofmeister"; 3 ske, 110 g each) pearl cotton 3 for satin stitch, 1 ball (10 g) pearl cotton 8 for the Maltese crosses.
All threads in white from DMC.

Instructions: cut fabric on grain to 70 x 70 cm, overcast raw edges. Begin embroidering satin stitch blocks at center of one side, approx. 11 cm from edge of fabric as marked by arrow in PC. The PC shows 1/2 of embroidery from arrow to arrow. For each further 1/2 turn PC by 90°. Embroider upon crease with Maltese crosses.
For the hem, turn fabric to 6 cm outside embroidery. Turn under 2 cm wide double hem, mitering corners, and finish. Stitch hem by hand.
Press finished "dolly" from wrong side using damp pressing cloth.

503/17 Center Cloth

in octagon shape from pg. 17.
Pattern chart (PC) on worksheet D.

Size: approx. 74 x 74 cm

Embroidery: 590 x 590 FT.

Materials: 0.85 m white even-weave fabric, 140 cm wide, 80 fabric threads 87/10 cm (Zweigart, art. "Kasper") - this model is also available from needlework shops as a kit containing cut fabric and PC - include M 295; 7 ske, (5 g each) DMC pearl cotton 3 in white for satin stitch, needlework floss with points, and cording.

Instructions: cut fabric on grain to 85 x 85 cm, overcast raw edges. Begin embroidering satin stitch blocks at center of one side, approx. 15 cm from edge of fabric (5.5 cm from embroidery + 9.5 FT to 1st satin stitch block) as marked by arrow in PC. The PC shows 1/2 of embroidery from arrow to arrow. For each further 1/2 turn PC by 90°. In open areas work cording and needlework floss with points. Finish work but leave satin stitch edges and tiny even-weave fabric carefully with sharp scissors. Press finished "center cloth" from wrong side under damp pressing cloth.

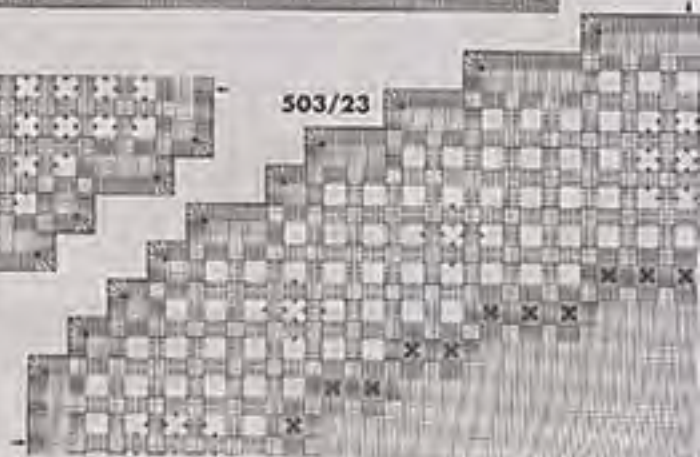


503/18



503/19

503/23



☆ 503/18

Dolly

on page 17

Pattern chart (PC) see left

Size: approx. 42 x 42 cm

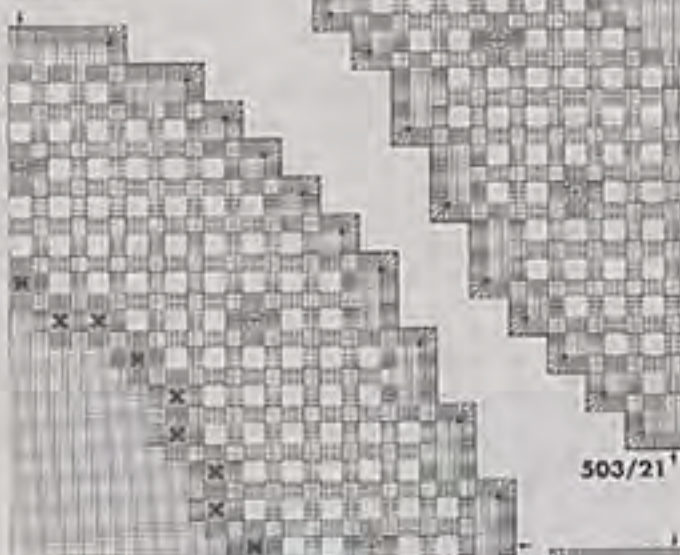
Interfacing: 216 x 216 ft

Materials: 0.50 m white, evenweave fabric, 140 cm wide, 75 fabric: Amelie F10/10 cm (Zweigart) or 306/100 (Hofmeier); 2 skt. (10 g each) worst cotton; 3 for each skirt and buttonhole edge; 2 bds (10 g each) worst cotton; 8 for neckband; 1 for waistband; 1 for skirt. All thread in white from DMC.

Instructions: Cut fabric as given to 50 x 50 cm, overlay top and pin. Begin interfacing with skirt block at center of one side. Approx. 4.5 cm from edge of fabric, as marked by arrow in PC. The PC shows 3 of embroidery from arrow to arrow. Work each

further 3 as mirror image. First work all with stitch, in open areas with needlework first. Finally work buttonhole skirt edge. Turn away, insert fabric carefully with sharp scissors. Press finished dolly from wrong side under damp pressing cloth.

PC: measure 5 cm from fabric edge. GP: corresponding PC. Each PC shows 1 of dolly from arrow to arrow. Work each 3 as mirror image. First work all with stitch and all stitches in open areas with needlework first and then with stitch. Finally work fabric hole skirt edge. Turn away, insert fabric with sharp scissors. Press finished dolly from wrong side under damp pressing cloth.



☆ 503/19 - 23

Dollies

on page 18

Pattern chart (PC) see pages 18/19

Size:

model 19: approx. 12 x 19 cm

model 20: approx. 20 x 28 cm

model 21: approx. 16 x 27 cm

model 22: approx. 20 x 22 cm

model 23: approx. 18 x 27 cm

Interfacing: model 19: 124 x 124 ft; model 20: 204 x 276 ft; model 21: 184 x 268 ft; model 22: 204 x 220 ft; model 23: 180 x 268 ft

Materials: large, evenweave fabric, 140 cm wide, 100 fabric: Amelie F10/10 cm (Zweigart) or 306/100 (Hofmeier) - 0.42 m is sufficient for all dollies; for each: 1 skt. (10 g each) worst cotton; 3 for each skirt and buttonhole edge; for each: 1 bdt (10 g each) worst cotton; 8 for neckband; 1 for waistband; 1 for skirt. All thread in white from DMC.

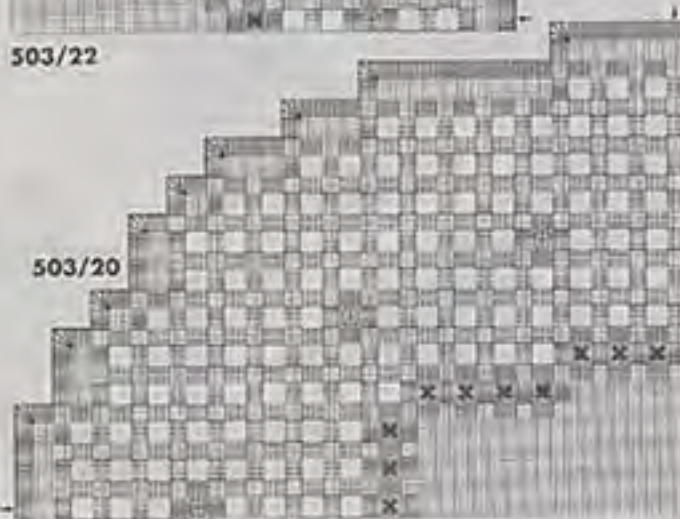
Cutting: Cut fabric as rough given, adding approx. 5 cm on all sides to finished dimensions given for each dolly.

Instructions: Begin each dolly at center of one side. In center of

503/22

503/20

503/21



*** 503/24 Tablecloth

on page 42.

Pattern shown (PG) A, on work shown A, PG 8, see below.

Size: approx. 140 x 177 cm

Embroidery: 510 x 608 FSt, on one needle each 128 x 128 FSt.

Materials: 2.05 m beige warp, weft fabric, 190 cm wide, 75 fabric threads 99/10 cm (Chester, cm., 3506/264 "Hudson"), 2 ske. (10 g each) pearl cotton 3 for satin stitch border, 12 balls (10 g each) pearl cotton 5 for satin stitch to edge edge of all about thread open, 2 balls (10 g each) pearl cotton 8 for needlework hair, hair stitch (Hag), eye stitches, cording, twisted hemlock, and twisted hemlock. All threads in beige 712 from DM.

Instructions: cut fabric on grain to 170 x 200 cm, measure one edge. Begin embroidery with pattern in center of one end, on page 42 6 cm from edge of fabric.

48 cm to embroidery = 20 FSt to 7.2 cm (stitch), no marked by double arrow in PG. PG 8 shows half of work to show A and the pattern repeat (P) begin arrow A to B. Complete 2nd half of end on same side. For work long side, repeat P from arrow A to B 7 times and then work 2nd and 3rd arrow image. First embroidery all side stitches, working edges of design thread lines with pearl cotton 5. Hair embroidery, eye stitches. Then work needlework hair with hair stitches or plait in open rows following P. Work cording and twisted hemlock in green thread lines (see PG and Chart). Begin hair side with row 29 cm (216 FSt) outside embroidery following PG. Work rows on all edges. Hair embroidery inner mouth. Then work 2nd side with row and center with eye stitches. For hair, use fabric to 7 cm from embroidery. Then work 3 cm wide double hair, working corner. Then hair 1 cm down to 4 FSt between side with row and 5 FSt between side with

side with row and hair. Embroider in the design thread line with hair, twisted hemlock. Work hair, working along outer. Then thread line, binding 2 FSt with each side, lower needle 2 FSt deep, working hair. Finish by working twisted hemlock, working along outer about thread line, cutting it thread border with each hair. Press finished tablecloth, then using side under sharp pressing cloth.

☆ 503/25 Square Tablecloth

on page 44.

Pattern shown (PG) on work shown C.

Size: approx. 124 x 124 cm

Embroidery: 276 x 276 FSt

Materials: 1.40 m twisted fabric in salmon, 140 cm wide, 75 fabric threads 99/10 cm (Zing, art. 3711/438 "Arista"), 2 ske. (10 g each) pearl cotton 2 for satin stitch, 3 ske. (10 g each)

pearl cotton 3 for needlework hair. All threads in salmon 333 from DM.

Instructions: cut fabric on grain to 140 x 140 cm and measure row edges. Begin embroidery with pink thread in center of one side, approx. 25 cm from edge of fabric, as marked by arrow in PG. The PG shows 1/2 of embroidery, from arrow to center. Complete all further quarters for PG by 90°. First work all side stitches. Then embroidery open group with needlework hair. For the hair, use fabric to 21 cm outside embroidery. Then work 2 cm wide double hair, working corner, and lower. Use a hair by hand. Press finished tablecloth, then using side under sharp pressing cloth.

☆ 503/26 Cushion

on page 44.

Pattern shown (PG) on work shown right.

Size: approx. 40 x 40 cm

Embroidery: 168 x 168 FSt

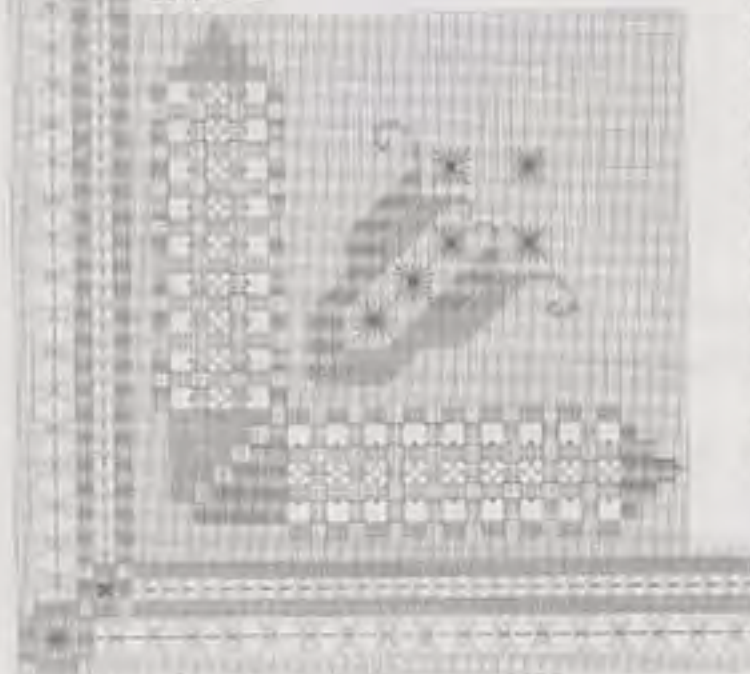
Materials: 0.45 m twisted fabric, 2 ske. pearl cotton 3 for satin stitch, 3 ske. pearl cotton 3 for needlework hair, 1 ske. 30 cm long for fabric and thread, and 2 ske. 22.

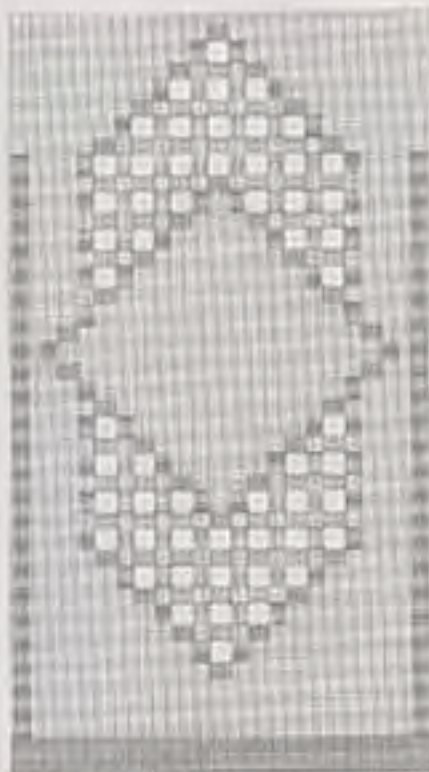
Cutting fabric: 45 x 45 cm front and 2 pieces, each 77 x 47 cm (back).

Instructions: piece out row edges of fabric. Mark center of each on front piece in both directions with tracing stitches in contrasting color, sliding under A 11 cm, 4 FSt. Work embroidery in center following PG. The PG shows one quarter of embroidery, from arrow to arrow. For work further quarters, turn PG by 90° to piece. For embroidery of side stitches, then work needlework hair in open rows. Press finished embroidery from wrong side under sharp pressing cloth. Use fabric to 7 cm outside embroidery (4 x 42 x 42 cm) and measure edges.

In new edition, see section 04 on page 20.

503/24 B





503/27

503/27 Lamp Shade

see page 45

Pattern chart (PC), see above

Size options: 30 in. high, round
Q 25 in., square 27 1/2 in.

Embroidery: 140 x 100 ft

Materials: 0.55 in. natural fabric; 3 in. pearl cotton 2 for outer shell; 2 in. pearl cotton 3 for reinforcement; 1 in. pearl cotton 8 for center; 228 for the top; 1 in. fabric and thread, see model 25; 1 lamp shade frame with 10 slots; 50 in. high; 10 and 15 in. 25 fabric band; 25 10 x 10 in.

Instructions: Cut fabric on grain to 30 x 125 in., overlap raw edges. Begin embroidering with shell stitch in center of lamp shade, 2 in. from edge of fabric as marked by arrow in PC.

The PC shows one pattern repeat (PR) from arrow to arrow. Work 2 PR on each side of center = 10 PR. Five additional PR will be done. Then, work reinforcement layer in upper corner and finish with butterfly stitch edge for embroidery in upper edge or just butterfly stitch edge and later work bands from lower edge. 17 in. above embroidery working platform repeat from arrow to arrow continuously. Finally, this many repeat fabric, double row to butterfly stitch, using sharp, pointed scissors. Trim fabric on the 2 narrow edges to 1 in. from embroidery. Overlap raw edges. Place shell stitch edge together and stitch with 1 in. wide seam. For each block, stitch together 4 PR with running stitches from 4 PR; then work back along without seam, stitch over edge of PR to 2.5 in. below upper edge of band. Then work 10 more back of same length for each PR, never working back higher than 2.5 in. below upper edge. Make sure that all back of each PR are even to avoid lumps. Put cover over sympathetic frame on flat surface with shell back to center. Fold raw lower edge to lower edge of frame with center stitching. From the sewing side, take a row of running stitches along upper end of back with pearl cotton. Put shell right and left.

503/28

Runner

see page 45

Pattern chart (PC), worksheet C

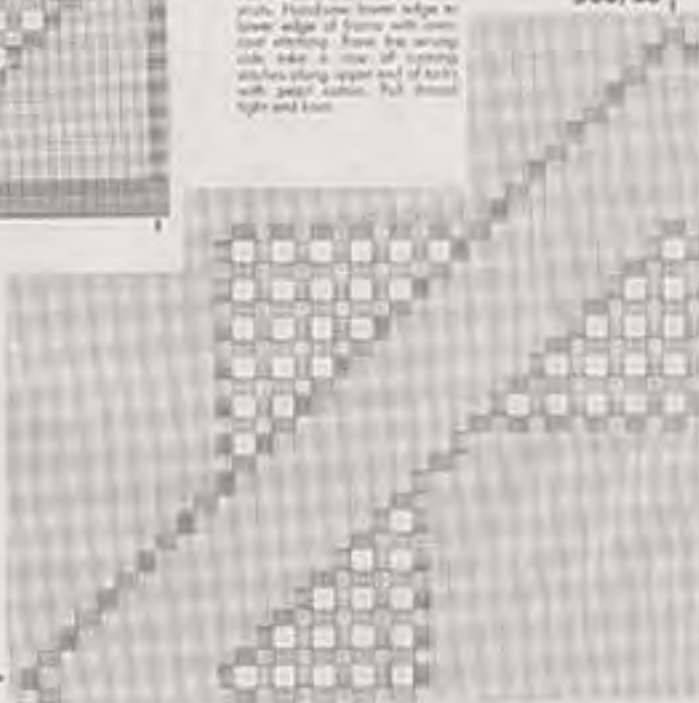
Size options: 51 x 67 in.

Embroidery: 160 x 400 ft

Materials: 0.55 in. natural fabric; 3 in. pearl cotton 2 for outer shell; 1 in. pearl cotton 3 for reinforcement; 1 in. fabric and thread, see model 25.

Instructions: Cut fabric on grain to 51 x 125 in., overlap raw edges. Begin embroidering with shell stitch in center of area and, repeat 2 in. from fabric edge as marked by double arrow in PC. The PC shows half the frame to sew. For the 2nd half, turn the PC by 180°. Put embroidery of same stitches. Then, work reinforcement layer in upper corner. Trim fabric to 8 in. from embroidery. Then stitch a 2 in. wide double fold and butterfly back to back. Place finished runner from sewing with center along pressing cloth.

503/26



© 503/29
Center Clock

© 2000 Blackwell Science Ltd
Journal of Internal Medicine 247: 395–402

Sample size: 41 \leq 43 cases.

Baltimore, 2002, p. 2002-49.

[illegible][illegible]60 503/30
Center Cloth

© 2000 Blackwell Science Ltd
Journal of Internal Medicine 247: 395–401

Stages: 1960-1969, 1970-1979, 1980-1989, 1990-1999, 2000-2009, 2010-2019, 2020-2029, 2030-2039, 2040-2049, 2050-2059, 2060-2069, 2070-2079, 2080-2089, 2090-2099, 2100-2109, 2110-2119, 2120-2129, 2130-2139, 2140-2149, 2150-2159, 2160-2169, 2170-2179, 2180-2189, 2190-2199, 2200-2209, 2210-2219, 2220-2229, 2230-2239, 2240-2249, 2250-2259, 2260-2269, 2270-2279, 2280-2289, 2290-2299, 2300-2309, 2310-2319, 2320-2329, 2330-2339, 2340-2349, 2350-2359, 2360-2369, 2370-2379, 2380-2389, 2390-2399, 2400-2409, 2410-2419, 2420-2429, 2430-2439, 2440-2449, 2450-2459, 2460-2469, 2470-2479, 2480-2489, 2490-2499, 2500-2509, 2510-2519, 2520-2529, 2530-2539, 2540-2549, 2550-2559, 2560-2569, 2570-2579, 2580-2589, 2590-2599, 2600-2609, 2610-2619, 2620-2629, 2630-2639, 2640-2649, 2650-2659, 2660-2669, 2670-2679, 2680-2689, 2690-2699, 2700-2709, 2710-2719, 2720-2729, 2730-2739, 2740-2749, 2750-2759, 2760-2769, 2770-2779, 2780-2789, 2790-2799, 2800-2809, 2810-2819, 2820-2829, 2830-2839, 2840-2849, 2850-2859, 2860-2869, 2870-2879, 2880-2889, 2890-2899, 2900-2909, 2910-2919, 2920-2929, 2930-2939, 2940-2949, 2950-2959, 2960-2969, 2970-2979, 2980-2989, 2990-2999, 3000-3009, 3010-3019, 3020-3029, 3030-3039, 3040-3049, 3050-3059, 3060-3069, 3070-3079, 3080-3089, 3090-3099, 3100-3109, 3110-3119, 3120-3129, 3130-3139, 3140-3149, 3150-3159, 3160-3169, 3170-3179, 3180-3189, 3190-3199, 3200-3209, 3210-3219, 3220-3229, 3230-3239, 3240-3249, 3250-3259, 3260-3269, 3270-3279, 3280-3289, 3290-3299, 3300-3309, 3310-3319, 3320-3329, 3330-3339, 3340-3349, 3350-3359, 3360-3369, 3370-3379, 3380-3389, 3390-3399, 3400-3409, 3410-3419, 3420-3429, 3430-3439, 3440-3449, 3450-3459, 3460-3469, 3470-3479, 3480-3489, 3490-3499, 3500-3509, 3510-3519, 3520-3529, 3530-3539, 3540-3549, 3550-3559, 3560-3569, 3570-3579, 3580-3589, 3590-3599, 3600-3609, 3610-3619, 3620-3629, 3630-3639, 3640-3649, 3650-3659, 3660-3669, 3670-3679, 3680-3689, 3690-3699, 3700-3709, 3710-3719, 3720-3729, 3730-3739, 3740-3749, 3750-3759, 3760-3769, 3770-3779, 3780-3789, 3790-3799, 3800-3809, 3810-3819, 3820-3829, 3830-3839, 3840-3849, 3850-3859, 3860-3869, 3870-3879, 3880-3889, 3890-3899, 3900-3909, 3910-3919, 3920-3929, 3930-3939, 3940-3949, 3950-3959, 3960-3969, 3970-3979, 3980-3989, 3990-3999, 4000-4009, 4010-4019, 4020-4029, 4030-4039, 4040-4049, 4050-4059, 4060-4069, 4070-4079, 4080-4089, 4090-4099, 4100-4109, 4110-4119, 4120-4129, 4130-4139, 4140-4149, 4150-4159, 4160-4169, 4170-4179, 4180-4189, 4190-4199, 4200-4209, 4210-4219, 4220-4229, 4230-4239, 4240-4249, 4250-4259, 4260-4269, 4270-4279, 4280-4289, 4290-4299, 4300-4309, 4310-4319, 4320-4329, 4330-4339, 4340-4349, 4350-4359, 4360-4369, 4370-4379, 4380-4389, 4390-4399, 4400-4409, 4410-4419, 4420-4429, 4430-4439, 4440-4449, 4450-4459, 4460-4469, 4470-4479, 4480-4489, 4490-4499, 4500-4509, 4510-4519, 4520-4529, 4530-4539, 4540-4549, 4550-4559, 4560-4569, 4570-4579, 4580-4589, 4590-4599, 4600-4609, 4610-4619, 4620-4629, 4630-4639, 4640-4649, 4650-4659, 4660-4669, 4670-4679, 4680-4689, 4690-4699, 4700-4709, 4710-4719, 4720-4729, 4730-4739, 4740-4749, 4750-4759, 4760-4769, 4770-4779, 4780-4789, 4790-4799, 4800-4809, 4810-4819, 4820-4829, 4830-4839, 4840-4849, 4850-4859, 4860-4869, 4870-4879, 4880-4889, 4890-4899, 4900-4909, 4910-4919, 4920-4929, 4930-4939, 4940-4949, 4950-4959, 4960-4969, 4970-4979, 4980-4989, 4990-4999, 5000-5009, 5010-5019, 5020-5029, 5030-5039, 5040-5049, 5050-5059, 5060-5069, 5070-5079, 5080-5089, 5090-5099, 5100-5109, 5110-5119, 5120-5129, 5130-5139, 5140-5149, 5150-5159, 5160-5169, 5170-5179, 5180-5189, 5190-5199, 5200-5209, 5210-5219, 5220-5229, 5230-5239, 5240-5249, 5250-5259, 5260-5269, 5270-5279, 5280-5289, 5290-5299, 5300-5309, 5310-5319, 5320-5329, 5330-5339, 5340-5349, 5350-5359, 5360-5369, 5370-5379, 5380-5389, 5390-5399, 5400-5409, 5410-5419, 5420-5429, 5430-5439, 5440-5449, 5450-5459, 5460-5469, 5470-5479, 5480-5489, 5490-5499, 5500-5509, 5510-5519, 5520-5529, 5530-5539, 5540-5549, 5550-5559, 5560-5569, 5570-5579, 5580-5589, 5590-5599, 5600-5609, 5610-5619, 5620-5629, 5630-5639, 5640-5649, 5650-5659, 5660-5669, 5670-5679

Revised: 1997

Materials. 1,35 is a mixture of isomers of general formula $C_{12}H_{18}O_2$ and is a colorless, odorless liquid with $n_D^{20} = 1.4260$, $d_4^{20} = 0.852$, $\eta_{40} = 0.31$ cP (measured at 40°C). It is a mixture of isomers with $m.p. = 4$ and $13^\circ C$ (measured under reduced pressure) and $b.p. = 128$ and $138^\circ C$ (measured at 0.5 mm Hg). The major isomer is 1,35a, which is a colorless, odorless liquid with $n_D^{20} = 1.4260$, $d_4^{20} = 0.852$, $\eta_{40} = 0.31$ cP (measured at 40°C). The other isomer is 1,35b, which is a colorless, odorless liquid with $n_D^{20} = 1.4260$, $d_4^{20} = 0.852$, $\eta_{40} = 0.31$ cP (measured at 40°C).

[illegible][illegible]

১১১ ১০৩/৩১
১১২০৩১

Abstract pages 1 to 3 for issue 22/42 and 23/42 have some comments. Abstract 205, 212 and not listing digital on page 23, please review on submission 5. Abstract items 212 is a 5, not page. Offsetting figures for 2nd row after column.

- 100

16. *Antennaria dioica* (L.) DC.
rough green, 4' tall, spreading
1' in diameter. 1 patch near
27.00 x 1.1' in. flower with
4-5 cm.

Indexing: with *divers*, FA, a
with *div*, with *divers* and a with *div*

Keywords: child sexual abuse; disclosure; self-blame

1999, 2000, 2001, 2002, 2003, 2004, 2005, 2006, 2007, 2008, 2009, 2010, 2011, 2012, 2013, 2014, 2015, 2016, 2017, 2018, 2019, 2020, 2021, 2022, 2023, 2024, 2025, 2026, 2027, 2028, 2029, 2030, 2031, 2032, 2033, 2034, 2035, 2036, 2037, 2038, 2039, 2040, 2041, 2042, 2043, 2044, 2045, 2046, 2047, 2048, 2049, 2050, 2051, 2052, 2053, 2054, 2055, 2056, 2057, 2058, 2059, 2060, 2061, 2062, 2063, 2064, 2065, 2066, 2067, 2068, 2069, 2070, 2071, 2072, 2073, 2074, 2075, 2076, 2077, 2078, 2079, 2080, 2081, 2082, 2083, 2084, 2085, 2086, 2087, 2088, 2089, 2090, 2091, 2092, 2093, 2094, 2095, 2096, 2097, 2098, 2099, 2100, 2101, 2102, 2103, 2104, 2105, 2106, 2107, 2108, 2109, 2110, 2111, 2112, 2113, 2114, 2115, 2116, 2117, 2118, 2119, 2120, 2121, 2122, 2123, 2124, 2125, 2126, 2127, 2128, 2129, 2130, 2131, 2132, 2133, 2134, 2135, 2136, 2137, 2138, 2139, 2140, 2141, 2142, 2143, 2144, 2145, 2146, 2147, 2148, 2149, 2150, 2151, 2152, 2153, 2154, 2155, 2156, 2157, 2158, 2159, 2160, 2161, 2162, 2163, 2164, 2165, 2166, 2167, 2168, 2169, 2170, 2171, 2172, 2173, 2174, 2175, 2176, 2177, 2178, 2179, 2180, 2181, 2182, 2183, 2184, 2185, 2186, 2187, 2188, 2189, 2190, 2191, 2192, 2193, 2194, 2195, 2196, 2197, 2198, 2199, 2200, 2201, 2202, 2203, 2204, 2205, 2206, 2207, 2208, 2209, 2210, 2211, 2212, 2213, 2214, 2215, 2216, 2217, 2218, 2219, 2220, 2221, 2222, 2223, 2224, 2225, 2226, 2227, 2228, 2229, 2230, 2231, 2232, 2233, 2234, 2235, 2236, 2237, 2238, 2239, 2240, 2241, 2242, 2243, 2244, 2245, 2246, 2247, 2248, 2249, 2250, 2251, 2252, 2253, 2254, 2255, 2256, 2257, 2258, 2259, 2260, 2261, 2262, 2263, 2264, 2265, 2266, 2267, 2268, 2269, 2270, 2271, 2272, 2273, 2274, 2275, 2276, 2277, 2278, 2279, 2280, 2281, 2282, 2283, 2284, 2285, 2286, 2287, 2288, 2289, 2290, 2291, 2292, 2293, 2294, 2295, 2296, 2297, 2298, 2299, 2300, 2301, 2302, 2303, 2304, 2305, 2306, 2307, 2308, 2309, 2310, 2311, 2312, 2313, 2314, 2315, 2316, 2317, 2318, 2319, 2320, 2321, 2322, 2323, 2324, 2325, 2326, 2327, 2328, 2329, 2330, 2331, 2332, 2333, 2334, 2335, 2336, 2337, 2338, 2339, 2340, 2341, 2342, 2343, 2344, 2345, 2346, 2347, 2348, 2349, 2350, 2351, 2352, 2353, 2354, 2355, 2356, 2357, 2358, 2359, 2360, 2361, 2362, 2363, 2364, 2365, 2366, 2367, 2368, 2369, 2370, 2371, 2372, 2373, 2374, 2375, 2376, 2377, 2378, 2379, 2380, 2381, 2382, 2383, 2384, 2385, 2386, 2387, 2388, 2389, 2390, 2391, 2392, 2393, 2394, 2395, 2396, 2397, 2398, 2399, 2400, 2401, 2402, 2403, 2404, 2405, 2406, 2407, 2408, 2409, 2410, 2411, 2412, 2413, 2414, 2415, 2416, 2417, 2418, 2419, 2420, 2421, 2422, 2423, 2424, 2425, 2426, 2427, 2428, 2429, 2430, 2431, 2432, 2433, 2434, 2435, 2436, 2437, 2438, 2439, 2440, 2441, 2442, 2443, 2444, 2445, 2446, 2447, 2448, 2449, 2450, 2451, 2452, 2453, 2454, 2455, 2456, 2457, 2458, 2459, 2460, 2461, 2462, 2463, 2464, 2465, 2466, 2467, 2468, 2469, 2470, 2471, 2472, 2473, 2474, 2475, 2476, 2477, 2478, 2479, 2480, 2481, 2482, 2483, 2484, 2485, 2486, 2487, 2488, 2489, 2490, 2491, 2492, 2493, 2494, 2495, 2496, 2497, 2498, 2499, 2500, 2501, 2502, 2503, 2504, 2505, 2506, 2507, 2508, 2509, 2510, 2511, 2512, 2513, 2514, 2515, 2516, 2517, 2518, 2519, 2520, 2521, 2522, 2523, 2524, 2525, 2526, 2527, 2528, 2529, 2530, 2531, 2532, 2533, 2534, 2535, 2536, 2537, 2538, 2539, 2540, 2541, 2542, 2543, 2544, 2545, 2546, 2547, 2548, 2549, 2550, 2551, 2552, 2553, 2554, 2555, 2556, 2557, 2558, 2559, 2560, 2561, 2562, 2563, 2564, 2565, 2566, 2567, 2568, 2569, 2570, 2571, 2572, 2573, 2574, 2575, 2576, 2577, 2578, 2579, 2580, 2581, 2582, 2583, 2584, 2585, 2586, 2587, 2588, 2589, 2590, 2591, 2592, 2593, 2594, 2595, 2596, 2597, 2598, 2599, 2600, 2601, 2602, 2603, 2604, 2605, 2606, 2607, 2608, 2609, 2610, 2611, 2612, 2613, 2614, 2615, 2616, 2617, 2618, 2619, 2620, 2621, 2622, 2623, 2624, 2625, 2626, 2627, 2628, 2629, 2630, 2631, 2632, 2633, 2634, 2635, 2636, 2637, 2638, 2639, 2640, 2641, 2642, 2643, 2644, 2645, 2646, 2647, 2648, 2649, 2650, 2651, 2652, 2653, 2654, 2655, 2656, 2657, 2658, 2659, 2660, 2661, 2662, 2663, 2664, 2665, 2666, 2667, 2668, 2669, 2670, 2671, 2672, 2673, 2674, 2675, 2676, 2677, 2678, 2679, 2680, 26

Remarks.—28 is white, 29 is yellow, 30 is brown, 31 is black, 32 is black, 33 is black, 34 is black, 35 is black, 36 is black, 37 is black, 38 is black, 39 is black, 40 is black, 41 is black, 42 is black, 43 is black, 44 is black, 45 is black, 46 is black, 47 is black, 48 is black, 49 is black, 50 is black, 51 is black, 52 is black, 53 is black, 54 is black, 55 is black, 56 is black, 57 is black, 58 is black, 59 is black, 60 is black, 61 is black, 62 is black, 63 is black, 64 is black, 65 is black, 66 is black, 67 is black, 68 is black, 69 is black, 70 is black, 71 is black, 72 is black, 73 is black, 74 is black, 75 is black, 76 is black, 77 is black, 78 is black, 79 is black, 80 is black, 81 is black, 82 is black, 83 is black, 84 is black, 85 is black, 86 is black, 87 is black, 88 is black, 89 is black, 90 is black, 91 is black, 92 is black, 93 is black, 94 is black, 95 is black, 96 is black, 97 is black, 98 is black, 99 is black, 100 is black.

Leaving—once parties discuss their objectives, they must agree. Some users naturally like to do this during meetings. And like us, a full complement of people agree. The parties cannot be there in person, so they agree. Some users prefer, adding information to a meeting agenda. In the future, we will have to be more explicit.

most types of stress and it provides some of those tools. For example, these techniques include how to relax, how to eat and sleep, how there is a whole lot of good and healthy in most stress, and things like that.

Editorial: Super computers are the brain child of America. The one million dollar 300,000 transistor super computer for the Atomic Energy Commission is the most sophisticated brain in the world. They come with long names, following the "X" that denotes the label of each generation: the first series A to E, the next eight from F to J, and the next three from K to L. The next series will exceed 100,000 transistors, ending with the 100,000th transistor.

[illegible]

Smoking: Marijuana was smoked on five of six occasions after the first admission to the study and on a further six occasions during the study period.

REFERENCES

...the
... ..
... ..
... ..
... ..
... ..
... ..
... ..
... ..
... ..

over the walls are just over 100 cm wide, so attachment must have been tight. I saw one 12 mm young, 2007, from a pair that I thought were single females, as indicated by the 100:100 ratio (42:44 mm), but both with 1 cm head-to-back width and no markings. A *Stethocentrus* would appear better, but I believe I will have added to my *Stethocentrus* list. I think *Stethocentrus* is more likely, but I am not sure. I have seen *Stethocentrus* when I was in the area, and I



503/31 A



503/37

Sampler

on page 52/53

Pattern sheet (PC) on worksheet 8

Size: approx. 25 x 25 cm

Embroidery: 220 x 220 FT

Materials: 0.35 m white even-weave fabric, 1.40 cm wide, 87 fabric threads (70/10 cm (2-wale) - art. 1003/1 "Subi"; 7 cm (10 g) pearl cotton 5 for satin stitch and buttonhole stitch edge; 1 ball (10 g) pearl cotton 5 for needleweave bars, cording, loop stitch filars, diagonal cording, straight stitches, star stitches, cable stitch, cross stitch, square stitch, and back stitch; A3 thread in beige 7/2 from DMC.

Instructions: Cut fabric on grain to 35 x 35 cm, centered row edges. Begin embroidery at center of one side (= arrow in PC) approx. 3 cm from fabric edge. First embroidery: all square stitches, spin stitches, star stitches, cable stitch, straight stitches, cross stitches, and back stitches. Then work needleweave bars, cording over 2 or 4 FT, loop stitch filars, and diagonal cording in open areas following PC. To embroider, see Course beginning on page 19. Finally work buttonhole stitch edge and carefully trim away excess fabric with sharp, pointed scissors. Press sampler, 1 cm wrong side under damp pressing cloth.

503/38

Coaster

on page 53

Pattern sheet (PC) on right

Size: approx. 9 x 9 cm

Embroidery: 100 x 100 FT

Materials: 20 x 20 cm even-weave fabric, 1 cm, or small amount pearl cotton 5 for satin stitch and buttonhole stitch edge; 1 ball or small amount pearl cotton 5 for cable stitch. For fabric and threads, see model 37.

Instructions: Overcast raw edges. Begin at center of end (= arrow in PC) approx. 3 cm from edge of fabric. This PC shows 1/2 of embroidery from arrow to arrow for each further 1 cm PC by 90°. First work all spin stitches and cable stitches. Then embroider buttonhole stitch edge and carefully trim away excess fabric with sharp, pointed scissors.

503/39

Sachet

on page 53

Pattern sheet (PC) on right

Size: approx. 7 x 11.5 cm

Embroidery: 60 x 200 FT

Materials: 20 x 35 cm even-weave fabric; 1 cm, or small amount pearl cotton 5 for satin stitch and buttonhole stitch edge; 1 ball or small amount pearl cotton 5 for needleweave bars, diagonal cording, square stitch, cable stitch, and hemstitching. Fabric and threads, see model 37.

Instructions: Overcast raw edges. Work embroidery in corner of fabric (= arrow in PC). The PC shows half of motif. For the 2nd half, turn PC by 180°. First embroider all spin stitches, square stitches, and cable stitches. Then work needleweave bars and diagonal cording in open areas. For hemstitching, draw out 4 FT of each end. Work hemstitching along both edges of drawn thread lines (knitting 2 FT and weaving, needle 2 FT) diagonally. Work buttonhole stitch edge and carefully trim away excess fabric on narrow edges with sharp, pointed scissors. Trim fabric on long edges to 1 cm from embroidery. Fold in half at widthwise center, right sides together. Stitch with 1 cm wide seam.

Quilted: sewn, alternated together. Turn right side out. For the cord, cut 4 pieces of pearl cotton 5, each 1.20 m long. Fold in half and push double threads to broad, 4-stranded braid. Weave through hemstitching. Pull to gather and tie ends in bow.

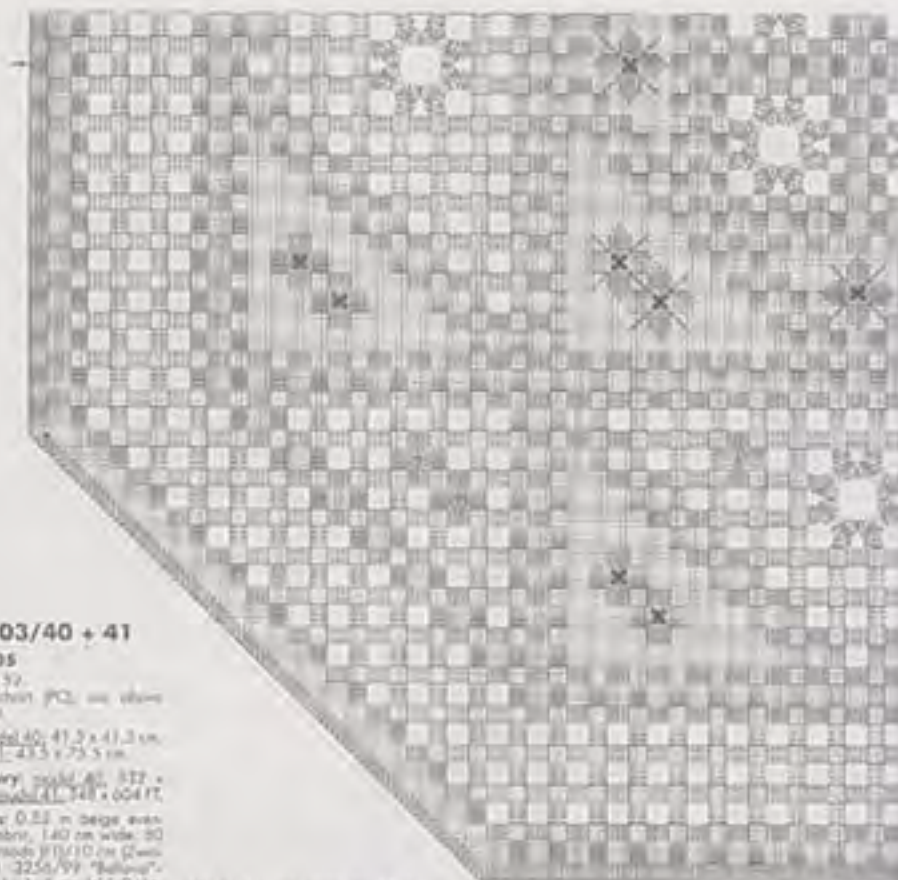


503/39



503/37





♦♦ 503/40 + 41 Dollies

on page 52

Pattern chart (PC), see above and right.

Size: model 40: 41.3 x 41.3 cm, model 41: 43.5 x 73.5 cm

Embroidery: model 40: 332 x 332 FT, model 41: 748 x 604 FT

Materials: 0.22 in beige even-weave fabric, 140 cm wide; 20 fabric threads (10/10 cm [2-wg] yarn; art-2256/99 "Bellaire" sufficient for both models; 9 ske. Wools for model 41) (10 g each) pearl cotton 5 in light beige 712 for satin stitch, needlework bars, Multisew crosses, edgeways, and buttonhole stitch edges, for each 1 ske (10 g each) cotton 3 in dark beige 644 for star stitches, Treadle from DMC.

Instructions: Model 40: cut fabric on grain to 55 x 55 cm, insert one edge. Begin embroidering satin stitch blocks in center of one side, approx. 2 cm from fabric edge, or arrow in PC. The PC shows all of embroidery from arrow to arrow. Work each further as a mirror image. First embroidery of satin stitches and star stitches. Then work needlework bars and edgeways in open areas. Finally work buttonhole stitch edges and the star stitches between buttonhole stitches and star stitches. Carefully trim away excess fabric with sharp, pointed scissors. Press finished dollies from wrong side under damp pressing cloth.

Model 41: cut fabric to 55 x 83 cm, insert the edge. Begin embroidering satin stitch blocks in center of one end, approx. 2 cm from fabric edge (2 cm to end edge) x 24 FT to 1st satin stitch block, or double arrow in PC. The PC shows one half of end from double arrow to arrow. A: Work 2nd half as mirror image. For each long side repeat pattern as per long arrow A to B 5 times and finish with 2nd end in mirror image. First embroidery of satin stitches. Then work needlework bars and Multisew crosses in open areas. Finally work buttonhole stitch edges and the star stitches between buttonhole stitches and star stitches. Carefully trim away excess fabric with sharp, pointed scissors. Press finished dollies from wrong side under damp pressing cloth.

503/41

♦ 503/42 + 43 Pin Cushion

on page 54

Pattern chart (PC) 37 C and L, see diagram 37 on page 33 and PC 37 or worksheet 8.

Size: approx. 10 x 10 cm

Embroidery: 55 x 55 FT

Materials: 20 x 20 cm even-weave fabric, 2 ske. of small amount pearl cotton 5 for satin stitch, 1 ball of small amount pearl cotton 3 for purple stitches, back stitches, and star stitches,

polyester sewing fabric, see thread, see model 37.

Instructions: Overstitch row edge. Work model C or L, including square stitches, from square model 37 in center of fabric. Trim fabric to 3 cm from edges; they are ends and 8.8 cm from embroidery on long sides. Press both right sides together with 1 cm wide seam, leaving 2 cm open in center of seam. Sew side seams, 1 cm wide. Turn pin cushion right side out and press. Stuff firmly with polyester stuffing. Handsew all closed.



503/40

☆ 503/44 - 47 Placemats & Napkins

on page 54/55
Pattern charts (PC) 37 T and G
see diagram 37 on page 32 and
PC 37 on worksheet B

Placemat size: approx. 25 x
42 cm
Napkin size: approx. 35 x
35 cm

Embroidery: each 35 x 38 ft

Materials: (Monogram for each
27 x 47 cm) **Needle:** for patch
27 x 37 cm evenweave fabric; 1
lin. or small amount pearl cotton
3 for satin stitch and straight
stitch; 1 ball or small amount
pearl cotton 8 for needlework
bars or cording over 2 ft; for
finer and thicker, see model 27.

Instructions: overcast raw edges.
Turn under 3 cm wide single
hem, entering corners. Finish
hem. Embroider motifs from
sampler (model 37) in upper cor-
ners; 5 cm from fabric edge,
working model 9. Needlework
bars for model 44 and motif G
(working for model 45). The
pieces of motifs should be knotted
separately. For napkins work
motif 3 in 3 corners; 5 cm from fabric
edge, working motif 1 for model
46 and motif G for model 47.
First work all satin stitches and
straight stitches. Then work
knotted bars or cording over 2
ft in upper corners. Press finished
articles from wrong side under
damp cloth.

Embroider embroidery from wrong
side under damp cloth. Turn
fabric 40 ft under, removing
embroidery in windows, placing
diagonally if desired. For model 49
leave embroidery in hand and
cover with paper for drying.

☆ 503/50 Sachet

on page 54
Pattern chart (PC) see below

Size: approx. 7 x 11.5 cm

Embroidery: 60 x 202 ft

Materials: 20 x 35 cm even-
weave fabric; 1 lin. or small amount
pearl cotton 3 for satin stitch and
buttonhole stitch edges; 1 ball or small
amount pearl cotton 8 for needlework
bars, loop with fabric, upper with
satin stitch and buttonhole
fining and finish; see model 60.

Instructions: see model 20, but
begin following PC 50.

☆ 503/51 Bookmark

on page 55
Pattern chart (PC) see below

Size: approx. 6 x 15 cm

Embroidery: 52 x 172 ft

Materials: 15 x 25 cm even-
weave fabric; 1 lin. or strip
pearl cotton 3 for satin stitch and
buttonhole stitch; 1 ball or small
amount pearl cotton 8 for needlework
bars + points. For fabric and
threads, see model 37.

Instructions: overcast raw edges.
Begin embroidery at center of
one end; approx. 5 cm from fabric
edge (a distance to PC) and
work to motif A. Then repeat B
from stripe A to B twice, ending
with satin stitch stripe B. First
work all satin stitches. Then work
needlework bars with purple in
upper corners. Finally work button-
hole stitch edge and carefully
iron away excess fabric with
sharp, pointed scissors.

☆☆ 503/52 Dolly

on page 56
Pattern chart (PC) see right

Size: approx. 44.5 x 56.5 cm

Embroidery: 356 x 432 ft

Materials: 0.55 m beige even-
weave fabric; 1.40 m wide 70
fabric threads 83/10 cm (24
per cm); 3256/254 "Beltona"
7 lin. (70 g each) pearl cotton 3
for satin stitch and buttonhole
stitch edges; 2 lin. (10 g each)
pearl cotton 3 for needlework
bars, loop with fabric, cording
and Maltese crosses. All threads
in color from LHM.

Instructions: iron fabric on gray
to 35 x 70 cm, overcast raw
edges. Begin embroidery with
satin blocks of center of one end;
approx. 7 cm from fabric edge
(double cross in PC). The PC
shows 3.66 embroidery for
double cross in center. Work
each further 5 cm more along
first work all satin stitches. The
embroider open cross with
needlework bars, adding the
satin fills and Maltese cross
following PC; for large fills
work Maltese crosses plus sat-
in over 2 ft; see also sam-
ple photo on page 57. Finally
work buttonhole stitch edges and
satin fills away excess fabric with
sharp, pointed scissors. Press
finished dolly from wrong side
using damp pressing cloth.

☆ 503/48 + 49 Greeting cards

on page 54
Pattern charts (PC) 37 A and I
see diagram 37 on page 35 and
PC 37 on worksheet B

Size: approx. 11 x 15.5 cm

Embroidery: each 44 x 44 ft

Materials: 25 x 35 cm evenweave
fabric; 1 lin. or small amount
pearl cotton 3 for satin stitch; 1
ball or small amount pearl cotton
8 for needlework bars, diagonal
cording, cross, satin and loop
with fabric; for each, 1 glass-
point stand; 10 x 15.5 cm with
red window. Double linen, art.
CR 60/60, OI 6 running for
finer and thicker, see model 27.

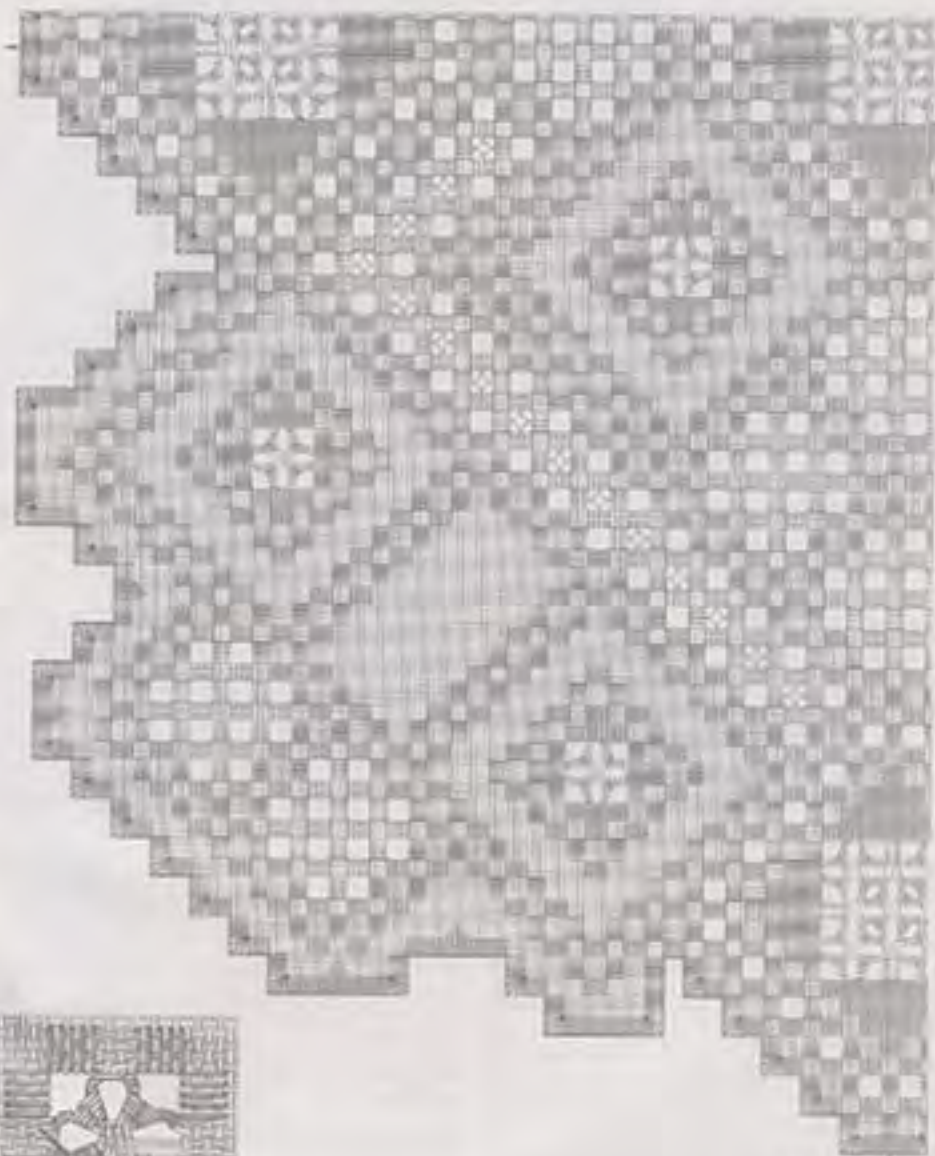
Instructions: overcast raw edges.
Work motif A on 1 cm sampler
(model 37) in center of fabric.
First work all satin stitch and
cross stitch. Then work needle-
work bars, diagonal cording or
loop with fabric in upper corners.



503/50



503/51



503/52





1 503/53

Then work needlework bars with large stitch fibers (model 55) or points (model 56) in open areas. To work large fibers for model 55 see models 52 + 54 and detail photo on page 59. For model 56 work 1 star stitch in center of doily as well as Motif clusters following PC. Finally work needlework edge. First draw out 14 ft on each side, 6 ft from embroidery for model 55 and 4 ft from embroidery for model 56, not removing threads past innermost bound by flower heads. Draw floral ends back into fabric. Sewing outer edges of corners with buttonhole stitches. Hemstitch lower edge of flower

heads twice, bundling 3 ft and inserting needle 2 ft deep. Trim fabric to 4.5 cm from flower heads. Turn under 1.5 cm wide double hem, mitering corners. Press hem. Hemstitch outer edge of flower head lines, curving hem. Work needlework bars following PC, working each bar over 3 ft under 3 ft. Work 1 large fiber in each corner following PC. First work diagonal reading and then stretch 2 bars around mid 2 vertical ovality heads. Work as described for large fibers for model 55. Press finished doilies from wrong side under damp pressing cloth.

503/57 Doily

on page 59

Pattern chart (PC) on worksheet A

Size: approx. 47.5 x 59 cm.

Embroidery: 428 x 532 FT.

Materials: 0.60 m. seamless fabric in blue, 140 cm wide, 90 fabric heads (75/10 cm Claviers, art. 3318/430 Tanna), 1 star (10 g each) pearl cotton 5 for outer star and buttonhole stitch edge, 1 ball (10 g) pearl cotton 8 for needlework bars with points and for large fibers. All threads in light blue 225 from DMC.

Instructions: cut fabric, in grain to 60 x 70 cm, vertical raw edges. Begin embroidering gold stitch blocks at center of one end, approx. 8.5 cm from fabric edge (5.5 cm to embroidery + 28 ft to 1st star stitch block), at double center in PC. The PC shows 1 embroidery from double center to center. Complete each further 1 as minor angle. First embroidery all over stitches. Then work needlework bars with points and large fibers (see models 52 + 54 and detail photo on page 59). Finally work buttonhole stitch edge and carefully, with every excess fabric.

503/24 Understated and elegant are the words that come to mind to describe this tablecloth. The terra-cotta color of the inner tablecloth shines through the open-work areas and could be replaced by a darker tone for a more dramatic statement. Size: 140 x 177 cm (Fabric: Zweigart; thread: DMC).



24



Exquisite

The subdued elegance of this tablecloth finds a perfect accent in the opulent handstitched border



*Graphic
in*



Southern Flair: Terra Cotta

*A breeze from Provence wafts
through your home in the form of two center
cloths in warm earth colors*

ENJOY CREATIVE NEEDLEWORK AND CRAFTS



Colorful butterflies, darling
cuddly animals, and wonderful
ideas for weddings,
christenings, and Mother's Day

A magazine from Anne Burds

503/29 Triangles serve as a never-ending source of design inspiration. Here they are staggered to yield the dynamic border treatment on this gorgeous center cloth. Size: 83 x 83 cm (Fabric: Weberei Hagelhorn; thread from DMC).

503/30 The appeal of this rustic center cloth lies in the strict graphic placement of the pattern elements. Size: 79 x 79 cm (Fabric from Zweigart; thread from DMC).



Folklore Blouse



503/31 Embroiderers love to wear their handwork! Many of our readers have written to us, requesting more patterns for traditional embroidered fashions. Here is a blouse designed especially for them. It is sewn from a single pattern, so you can con-

centrate on the embroidery. The tzigree borders on sleeves and blouse fronts are real eye-catchers. Choose a finelywoven fabric to give your blouse a soft drape. Sizes 38/40 and 42/44; (fabric from Zweigart; threads from DMC).



All with the same pattern: tablecloth, napkins, napkin case, and center cloth

White is Wonderful

503/ 32 - 35 Sections of the wonderful wide border down the center of this tablecloth are repeated on the other three models. The tablecloth was made in Norway where it was purchased by one of our editors. She said that it had been embroidered by an old lady there, who worked only from memory to produce this exquisite example of traditional needlework. Size, tablecloth: 117 x 199 cm; center cloth: 80 x 80 cm; napkin: 40 x 40 cm; napkin case: 16 x 28 cm (fabrics: Zweigart; thread: DMC).



503/36 - 38 Put left over fabric and thread to good use with the bookmark, sachet, and coaster. The sampler is not only a good source of inspiration for your personal design projects, it is also very decorative. Size: Bookmark: 6 x 18 cm; sachet: 25 x 25 cm; coaster: 7 x 11.5 cm; coaster: 9 x 9 cm.

503/39 - 40 Two lovely dishes - one with lavish embroidery, the other with a quieter charm. The choice is yours! Sizes: 41.5 x 41.5 cm or 43.5 x 43.5 cm (Fabric from two girls' embroidery (Dress) from DMC)



A virtual treasure trove of design inspiration. Grandmother's sampler with its array of traditional patterns. Every collector's heart beats faster at the sight of such a beautiful example of embroidery.



Weben ist seit über
zwei Jahrhunderten
unser Beruf,
und jetzt gibt es
direkt ab Weberei

LEINEN FÜR STICKEREI- ARBEITEN

in verschiedenen
Breiten zu sehr
günstigen Preisen.

**30 Sorten
Stoffe
von 10 bis 22
Fäden/cm**

Muster erhalten Sie
gegen Zusendung
von DM 4.-
in Briefmarken bei:

WEBEREI GANDER
Postfach 1332
D-79344 ENDINGEN

*A Wealth
of Inspiration*

Hiermit bitte ich um Zusendung von Mustern
(ohne Rückzahl.)

Name
Geburts
Geburts
PLZ/St

42

43

44

*Traditional designs,
put to modern use.
All motifs were taken
from the sampler shown
on page 28.
You can easily see
how versatile these
patterns are.*

46

48

50

49



45

47

51

503/42 - 51 A sampler was not only an opportunity to practice various patterns, it also served as a reference for future use of it's creator, if she needed a motif to decorate a new project. She didn't have to look far - she had her sampler at hand. Here we've used the selection of simple Hardanger patterns to embellish placemats, napkins, sachets, pouches, greeting cards, and bookmarks. (Fabric from Zweigart, embroidery thread from DMC.)



*Special Challenges
for Experts*



503/52 A masterpiece like this takes time and effort, but it's well worth the investment. The detail photo (left) shows the sophisticated filling in the centers of the large diamonds. Size: 44.5 x 50.5 cm (Fabric: Zweigart; thread: DMC).

503/53 + 54 Two dolls that will be the center of attention. It's the beautiful strings in the openwork areas and at the base that make these dolls so special. Experienced embroiderers should have no trouble creating these exquisite examples of Hardanger. Sizes: 41.5 x 41.5 cm or 41 x 41 cm (Fabric: from Zweigart; embroidery threads from DMC).



Power Patterns in Pale Lilac

Who says that Hardanger embroidery has to be white? It's beautiful in color, too.

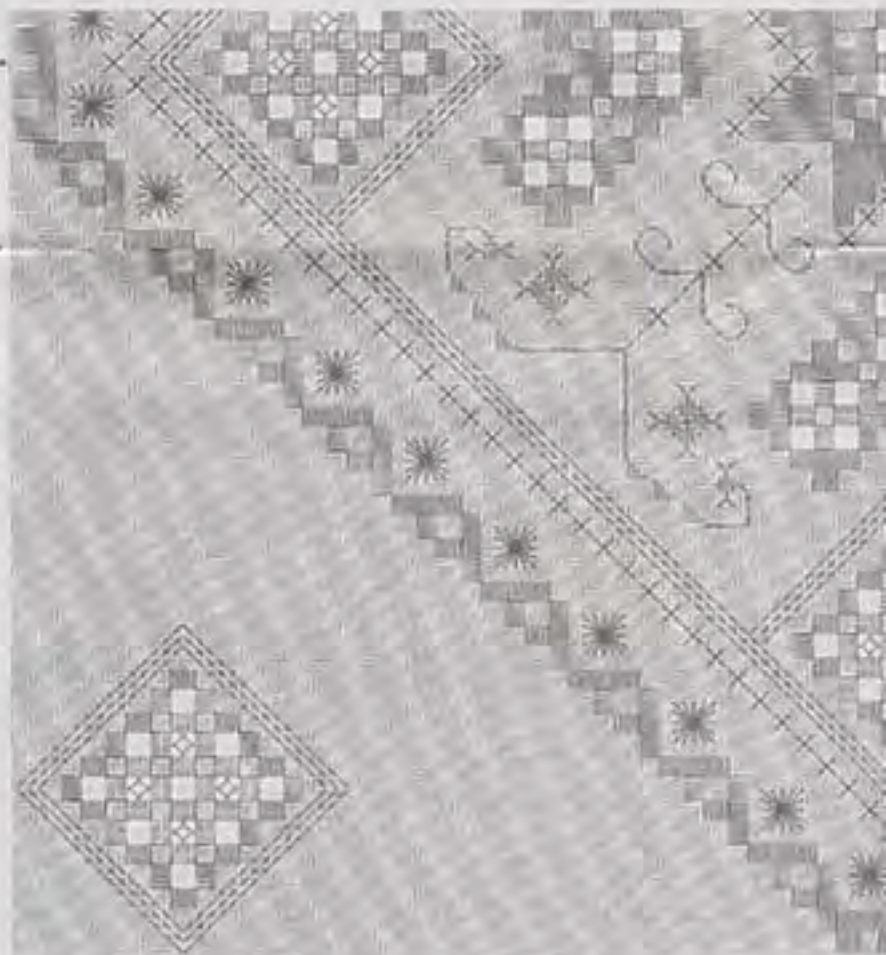


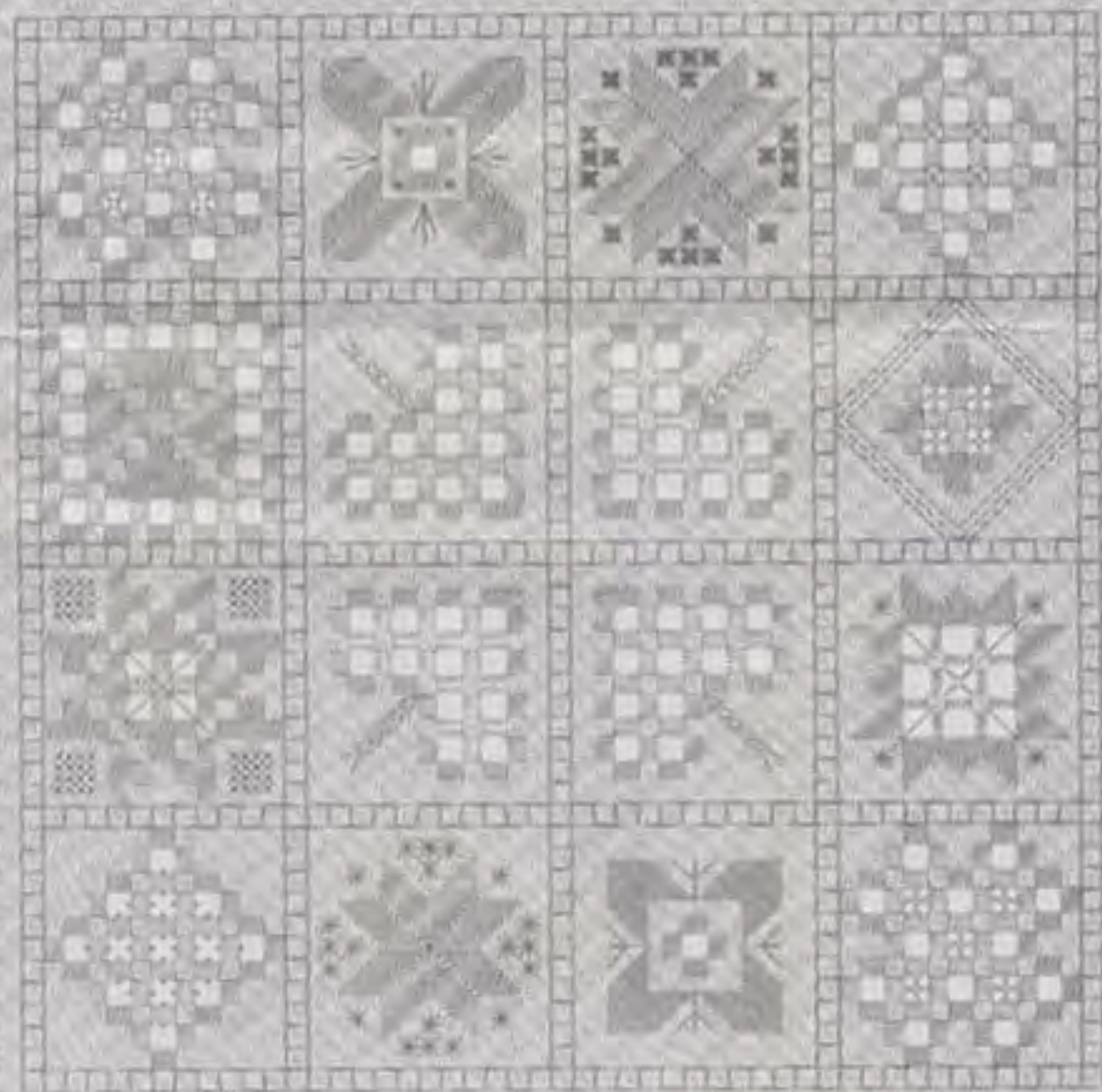
503/55 - 57 Use fashionable lace to decorate your home. These three models will surely appeal to your romantic nature. The centers are accented with a stylized clover leaf, an elegant bow, or intricate tiling (see detail photo). Attractive drawn thread work at the edges is the perfect finishing touch. Model 55: size 55 x 55 cm; model 56: 56 x 56 cm; model 57: 47.5 x 59 cm (Exquisite fabric for all models, from Zweigart threads from GMC).



burda
SPECIAL
HARDANGER







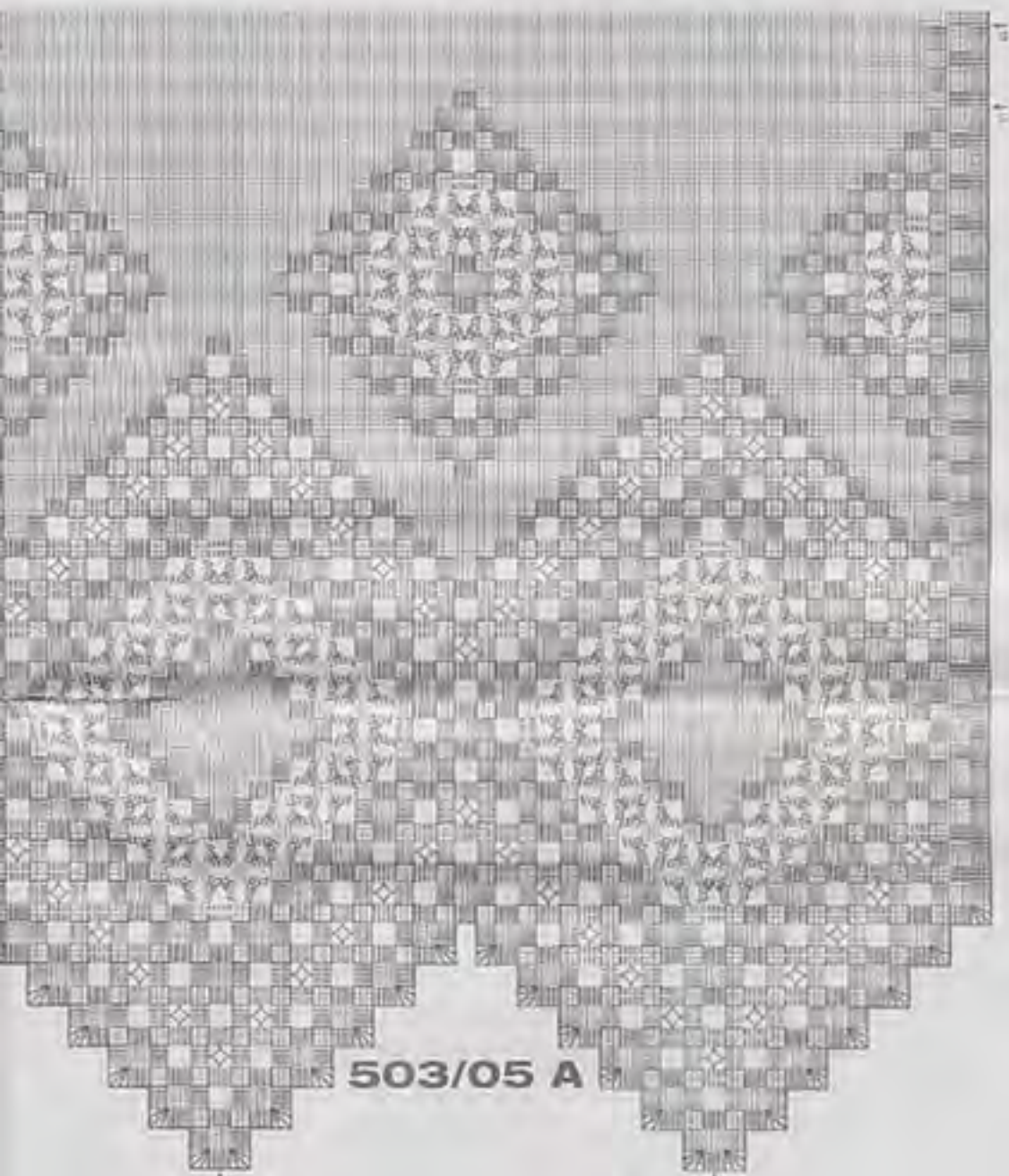
503/55



503/10

503/56





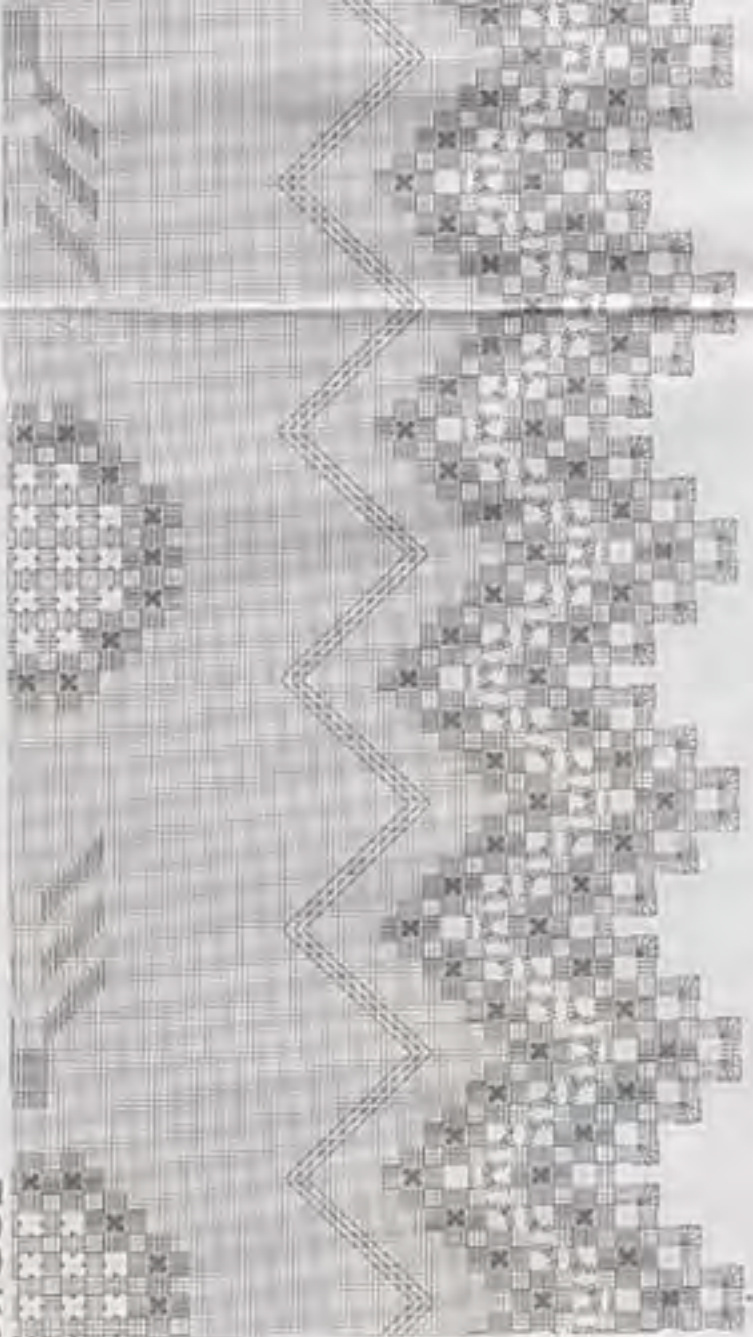
503/05 A

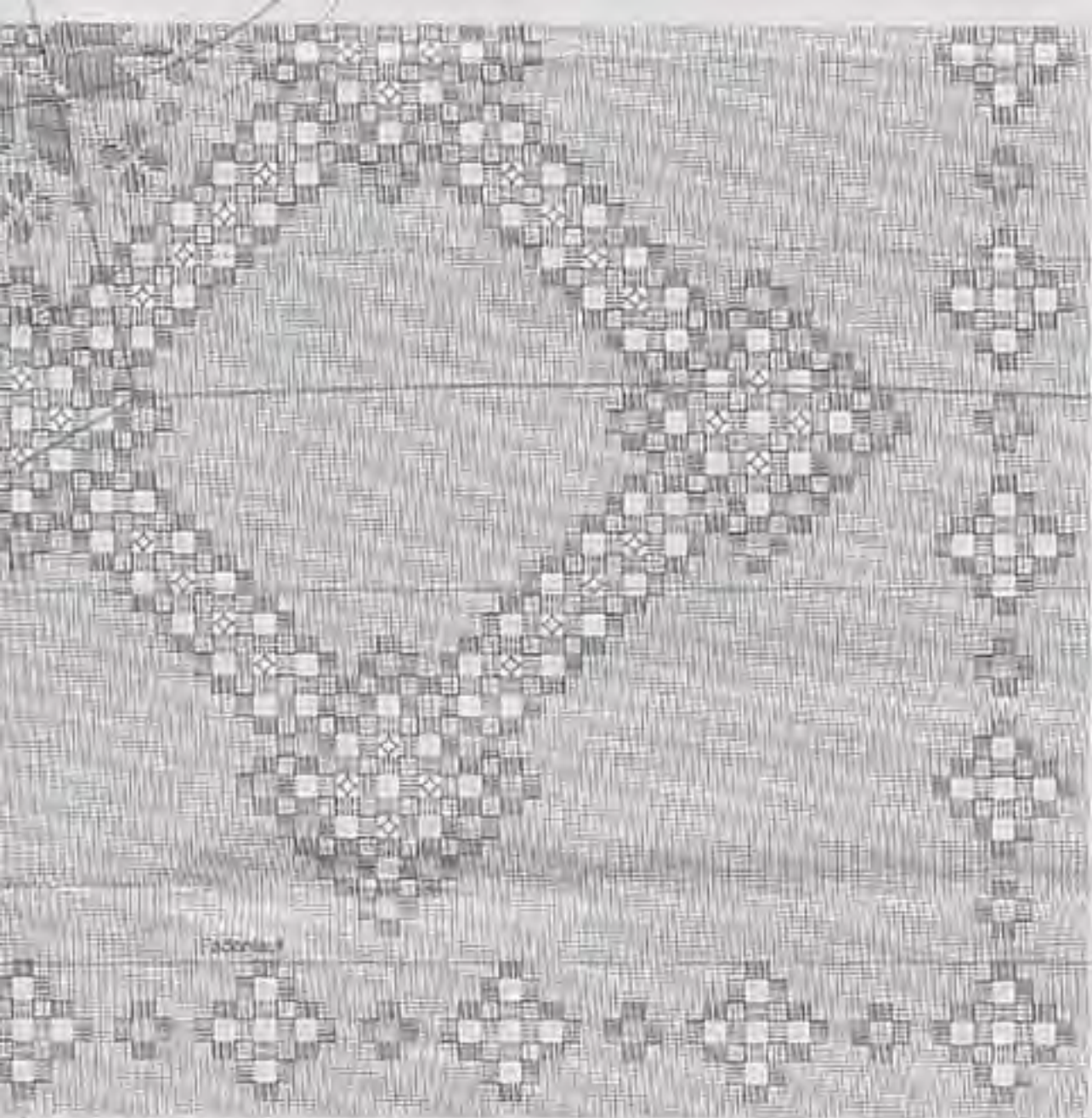
503/05 B

tu

tu







Fadon